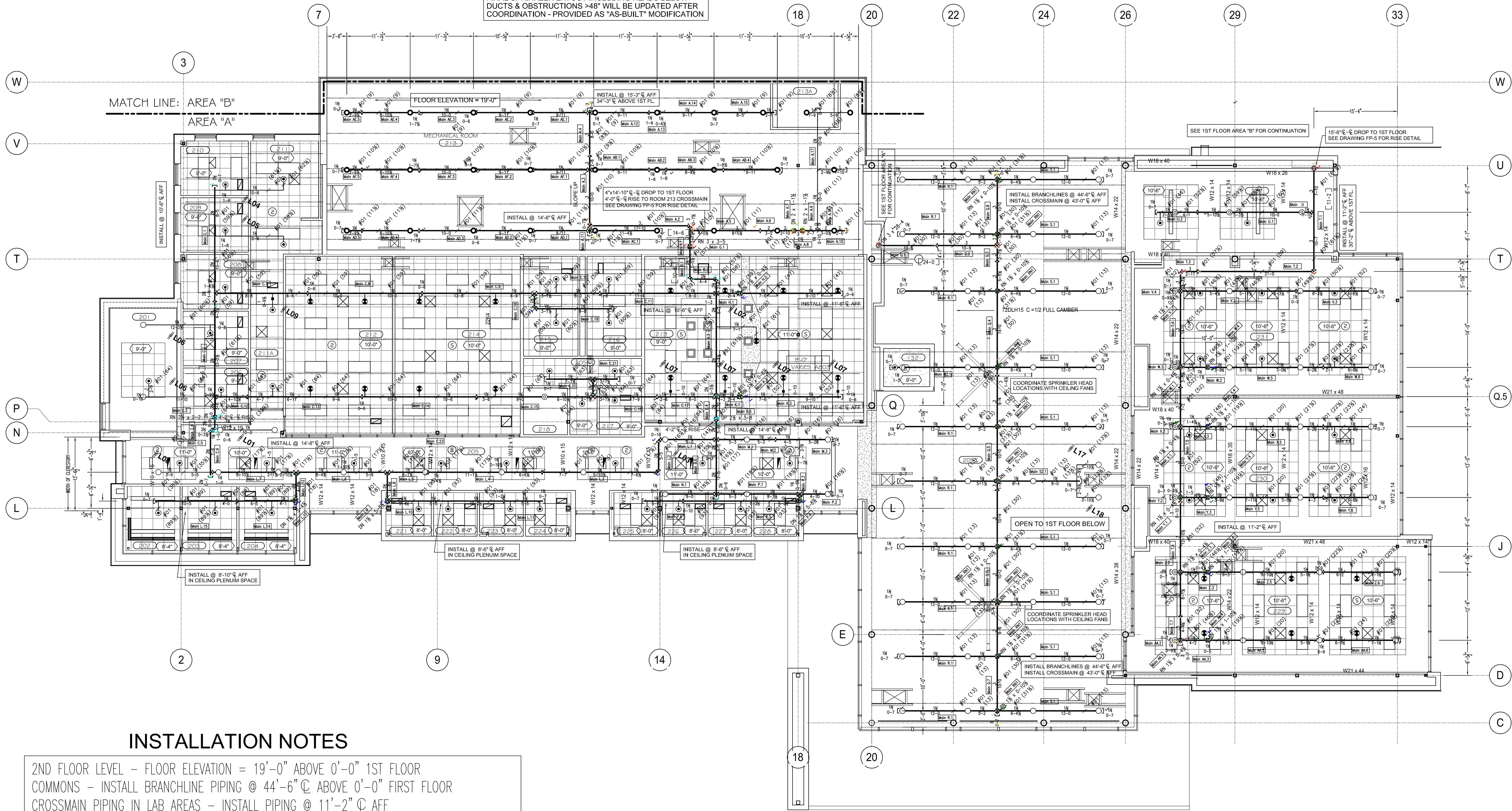


MECHANICAL ROOM #213

FINAL SPRINKLER LAYOUT INCLUDING HEADS BELOW
DUCTS & OBSTRUCTIONS >48" WILL BE UPDATED AFTER
COORDINATION - PROVIDED AS "AS-BUILT" MODIFICATION

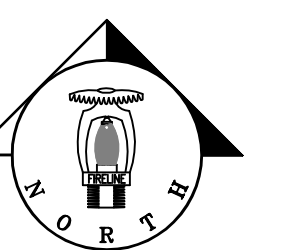
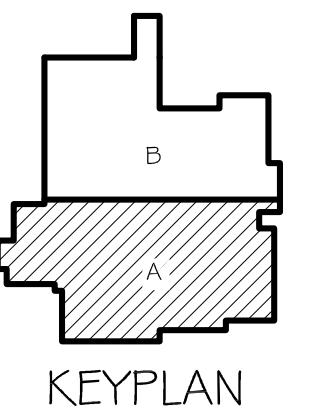


INSTALLATION NOTES

2ND FLOOR LEVEL - FLOOR ELEVATION = 19'-0" ABOVE 0'-0" 1ST FLOOR
 COMMONS - INSTALL BRANCHLINE PIPING @ 44'-6" C ABOVE 0'-0" FIRST FLOOR
 CROSSMAIN PIPING IN LAB AREAS - INSTALL PIPING @ 11'-2" C AFF
 OFFICE AREAS - INSTALL PIPING @ 10'-6" C AFF (RISE WHERE INDICATED)
 OFFICE AREAS - INSTALL SPRIGS FOR UPRIGHT SPRINKLER HEADS WHERE SHOWN
 CROSSMAIN PIPING IN MECHANICAL RM. 213 - INSTALL PIPING @ 14'-6" C AFF - SLOPE UP
 WEST CLERESTORY AREA
 BEAM ELEVATIONS VARY THIS AREA FROM 10" TO 14" - OBSTRUCTED CONST.
 UPRIGHT SPRINKLER HEADS TO BE LOCATED 1"-6" MAX. BELOW BEAM
 BRANCHLINE PIPING ELEVATIONS ELIMINATE THE NEED FOR SPRIGS

2ND FLOOR - 16,827 SQ.FT.

SCALE: 1/8" = 1'-0"



NO.	REVISIONS	BY	DATE
1	UPDATES PER MIRON CONSTRUCTION REVIEW	REPK	2/7/19

SYM.	QTY.	SPRINKLERS	DESCRIPTION
○	28	TY313 5.6	TY313 TY-FRB 5.6K OR SC BRASS UPRIGHT
○	30	TY313 5.6	TY313 TY-FRB 5.6K OR SC BRASS UPRIGHT
○	32	TY331 5.6	TY331 TY-FRB 5.6K OR SC CONCEALED WHITE PENDENT
○	23	TY632 11.2	TY632 TY-ELC 11.2K OR EC CONCEALED WHITE PENDENT

AHJ:	TOTAL # SPRINKLERS ON PROJECT = 623	TOTAL SYSTEMS ON PROJECT = (2)	(1) WET & (1) DRY SYSTEM PER NFPA #13 - 2013 EDITION
GREEN BAY			

NICET Level IV Automatic Sprinkler
System Layout Certification #79357
Richard P. Kossler

FIRELINE
SPRINKLER CORPORATION

5036 Clearmont Drive
Appleton, WI 54913
WI Sprinkler Contractor #231513
IL Sprinkler Contractor #7113153
NE Sprinkler Contractor #53083

Office: (920) 757-9590
Fax: (920) 757-9591
IA Sprinkler Contractor #FES-0798
ND Sprinkler Contractor #24692
MO Sprinkler Contractor #7072644

TITLE			
2ND FLOOR SPRINKLER PLAN			
DRWN	RPK	CHK'D	DATE 12/27/18
SCALE	AS NOTED	CAD FILE	XXXXXX.DWG

PROPERTY
BROWN COUNTY STEM INNOVATION CENTER
GREEN BAY, WISCONSIN