

REMOTE AREA - 2ND FLOOR OFFICE	
HYDRAULIC DESIGN DATA	
HAZARD CLASSIFICATION	LIGHT HAZARD
SYSTEM TYPE	WET PIPE
WATER SUPPLY	STATIC: 72 PSI
	RESIDUAL: 49 PSI
DENSITY / REMOTE AREA	0.15 GPM/SQ.FT. OVER REMOTE 1,002 SQ.FT.
# SPRINKLERS FLOWING	13
COVERAGE PER SPRINKLER	130 SQ.FT. MAX. - (SPACING VARIES)
SYSTEM REMARK:	202.7 GPM @ 44.5 PSI
HOSE ALLOWANCE:	25.1 GPM @ 34.0 PSI
PSI DESIGN:	12.98 PSI

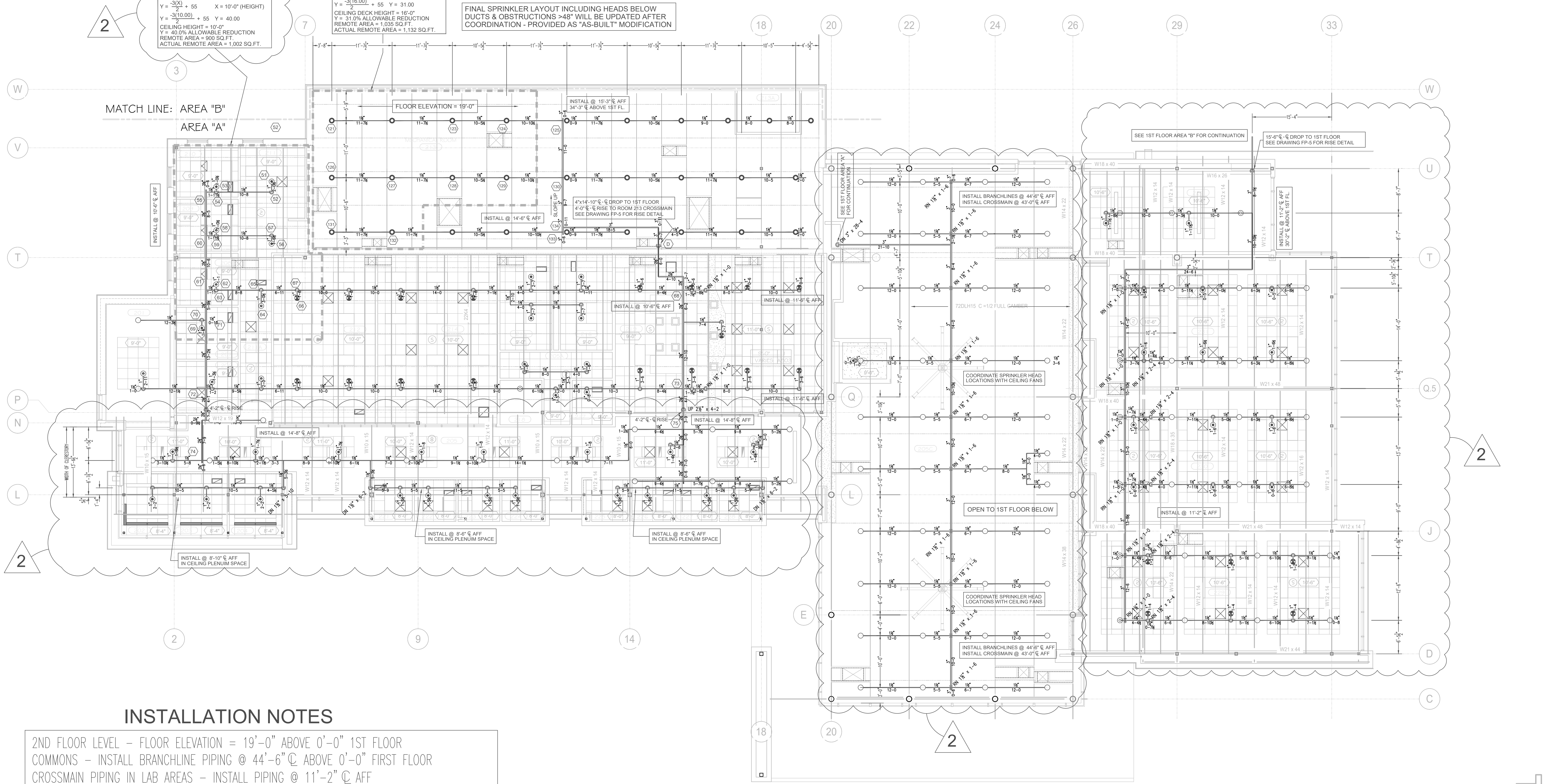
DESIGN AREA REDUCTION - NFPA FIG. 11.2.3.2.3.1
 $Y = \frac{-3(X) + 55}{2} + 55$ X = 10'-0" (HEIGHT)
 $Y = \frac{-3(10.00) + 55}{2} + 55$ Y = 40.00
 CEILING HEIGHT = 10'-0"
 Y = 40.0% ALLOWABLE REDUCTION
 REMOTE AREA = 900 SQ.FT.
 ACTUAL REMOTE AREA = 1,002 SQ.FT.

REMOTE AREA - 2ND FLOOR MECHANICAL	
HYDRAULIC DESIGN DATA	
HAZARD CLASSIFICATION	DRYPIPE HAZARD
SYSTEM TYPE	WET PIPE
WATER SUPPLY	STATIC: 72 PSI
	RESIDUAL: 49 PSI
DENSITY / REMOTE AREA	0.15 GPM/SQ.FT. OVER REMOTE 1,132 SQ.FT.
# SPRINKLERS FLOWING	13
COVERAGE PER SPRINKLER	130 SQ.FT. MAX. - (SPACING VARIES)
SYSTEM REMARK:	202.7 GPM @ 44.5 PSI
HOSE ALLOWANCE:	25.1 GPM @ 34.0 PSI
PSI DESIGN:	12.98 PSI

DESIGN AREA REDUCTION - NFPA FIG. 11.2.3.2.3.1
 $Y = \frac{-3(X) + 55}{2} + 55$ X = 16'-0" (HEIGHT)
 $Y = \frac{-3(16.00) + 55}{2} + 55$ Y = 31.00
 CEILING DECK HEIGHT = 16'-0"
 Y = 31.0% ALLOWABLE REDUCTION
 REMOTE AREA = 1,035 SQ.FT.
 ACTUAL REMOTE AREA = 1,132 SQ.FT.

MECHANICAL ROOM #213

FINAL SPRINKLER LAYOUT INCLUDING HEADS BELOW DUCTS & OBSTRUCTIONS >48" WILL BE UPDATED AFTER COORDINATION - PROVIDED AS "AS-BUILT" MODIFICATION

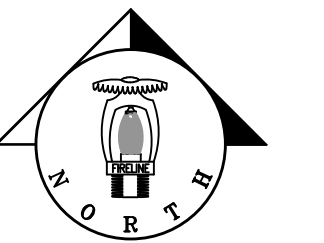
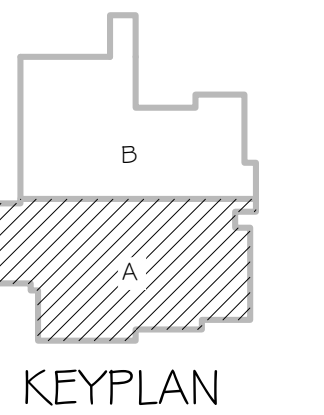


INSTALLATION NOTES

2ND FLOOR LEVEL - FLOOR ELEVATION = 19'-0" ABOVE 0'-0" 1ST FLOOR
 COMMONS - INSTALL BRANCHLINE PIPING @ 44'-6" C ABOVE 0'-0" FIRST FLOOR
 CROSSMAIN PIPING IN LAB AREAS - INSTALL PIPING @ 11'-2" C AFF
 OFFICE AREAS - INSTALL PIPING @ 10'-6" C AFF (RISE WHERE INDICATED)
 OFFICE AREAS - INSTALL SPRIGS FOR UPRIGHT SPRINKLER HEADS WHERE SHOWN
 CROSSMAIN PIPING IN MECHANICAL RM. 213 - INSTALL PIPING @ 14'-6" C AFF - SLOPE UP
 WEST CLERESTORY AREA
 BEAM ELEVATIONS VARY THIS AREA FROM 10" TO 14" - OBSTRUCTED CONST.
 UPRIGHT SPRINKLER HEADS TO BE LOCATED 1"-6" MAX. BELOW BEAM
 BRANCHLINE PIPING ELEVATIONS ELIMINATE THE NEED FOR SPRIGS

2ND FLOOR - 16,827 SQ.FT.

SCALE: 1/8" = 1'-0"



NO.	REVISIONS	BY	DATE
1	UPDATES PER MIRON CONSTRUCTION REVIEW	RPK	2/7/19

SYM.	QTY.	SPRINKLERS	DESCRIPTION
○	38	TY913	5.6K OR SC BRASS UPRIGHT
○	84	TY913	5.6K OR SC BRASS UPRIGHT
○	52	TY931	5.6K OR SC CONCEALED WHITE PENDENT
○	23	TY952	11.2K OR SC CONCEALED WHITE PENDENT

NICET Level IV Automatic Sprinkler System Layout Certification #79357
 Richard P. Kossler

FIRELINE
 SPRINKLER CORPORATION
 5636 Chalmers Drive
 Appleton, WI 54913
 WI Sprinkler Contractor #231813
 MI Sprinkler Contractor #7113153
 IL Sprinkler Contractor #SC0083

Office: (920) 757-9590
 Fax: (920) 757-9591
 IA Sprinkler Contractor #F5-0798
 ND Sprinkler Contractor #34692
 MO Sprinkler Contractor #F00726044

2ND FLOOR SPRINKLER PLAN	
DRWN	RPK
CHK'D	CHD
DATE	12/27/18
SCALE	AS NOTED
CAD FILE	XXXXXXXX.DWG

BROWN COUNTY STEM INNOVATION CENTER
 GREEN BAY, WISCONSIN

SHEET/DRAWING No.	
FP-4 OF 5	
PROJECT	REV.
11670-18	-