

INSTALLATION NOTES

OFFICE AREAS - INSTALL PIPING @ 14'-8" C AFF
 SHOP AREAS W/O CEILINGS - INSTALL PIPING @ 16'-7" C AFF BELOW BEAMS
 CROSSMAIN PIPING IN DOCK / ROOM 163 INSTALL @ 16'-8" C AFF
 CROSSMAIN PIPING IN WAREHOUSE 162 - INSTALL PIPING @ 22'-0" C AFF
 CROSSMAIN PIPING IN WAREHOUSE 161 - INSTALL PIPING @ 17'-0" C AFF
 CROSSMAIN PIPING FOR DOCK 163 - PITCH @ 1/4" PER 10'-0"
 BRANCHLINE PIPING FOR DOCK 163 - PITCH @ 1/2" PER 10'-0"

REMOTE AREA - WAREHOUSE (STORAGE)

HYDRAULIC DESIGN DATA	
HAZARD CLASSIFICATION	ORDINARY HAZARD GROUP 1
SYSTEM TYPE	WET PIPE
WATER SUPPLY	STATIC: 72 PSI
	RESIDUAL: 48 PSI
	CPM FLOW: 1,583 GPM
DENSITY / REMOTE AREA:	0.15 GPM/SQ.FT. OVER ENTIRE 680 SQ.FT.
# SPRINKLERS FLOWING:	7
COVERAGE PER SPRINKLER:	97.15 SQ.FT. AVG.
SYSTEM DEMAND:	394.1 GPM @ 54.30 PSI
ROSE ALLOWANCE:	200 GPM - OUTSIDE ROSE INCLUDED
PSI CUSHION:	15.77 PSI

DRY SYSTEM GALLONAGE

80 GALLONS

REMOTE AREA - SHOP AREA

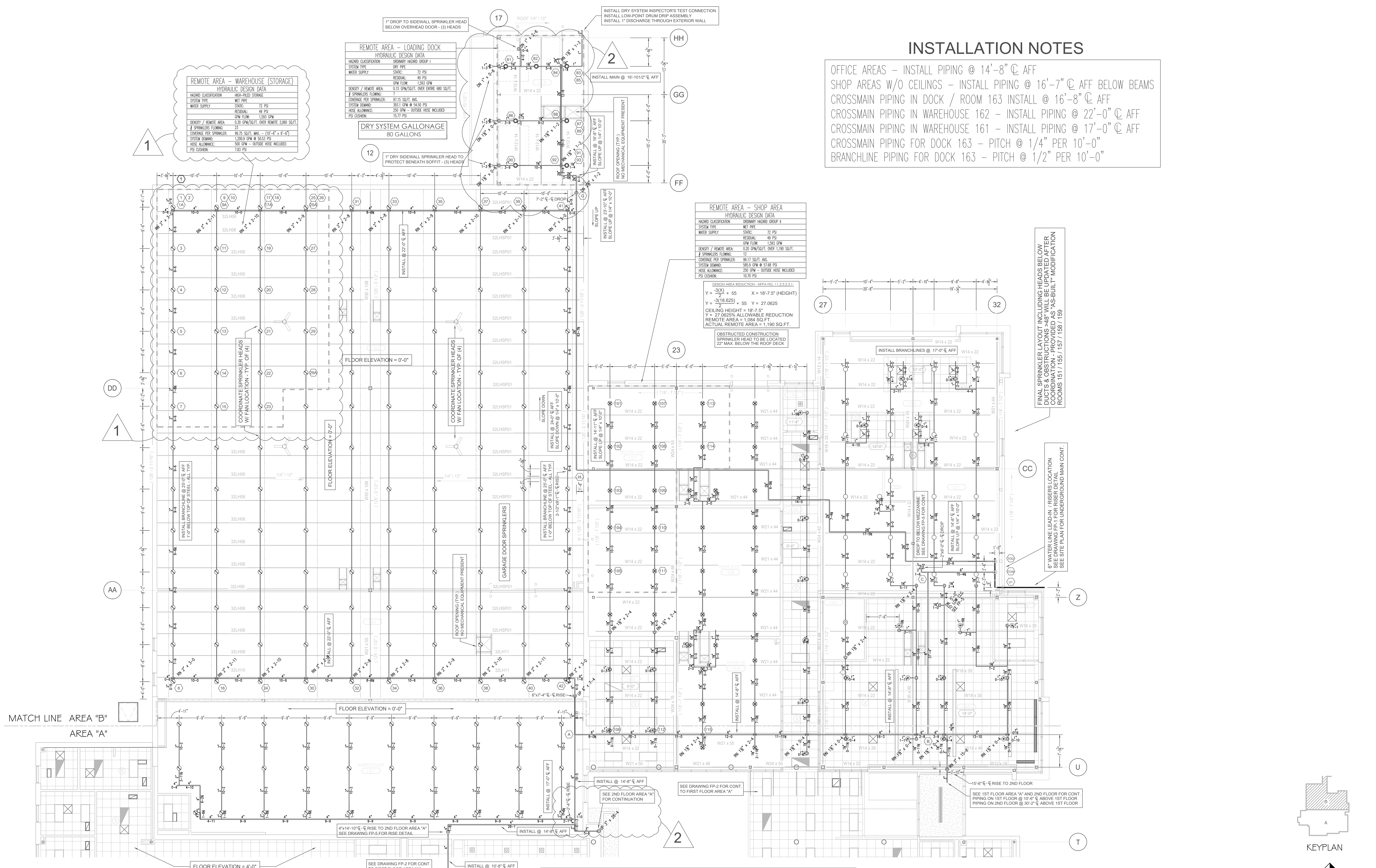
HYDRAULIC DESIGN DATA	
HAZARD CLASSIFICATION	ORDINARY HAZARD GROUP 1
SYSTEM TYPE	WET PIPE
WATER SUPPLY	STATIC: 72 PSI
	RESIDUAL: 48 PSI
	CPM FLOW: 1,583 GPM
DENSITY / REMOTE AREA:	0.20 GPM/SQ.FT. OVER 1,190 SQ.FT.
# SPRINKLERS FLOWING:	17
COVERAGE PER SPRINKLER:	69.17 SQ.FT. AVG.
SYSTEM DEMAND:	586.9 GPM @ 53.88 PSI
ROSE ALLOWANCE:	200 GPM - OUTSIDE ROSE INCLUDED
PSI CUSHION:	10.70 PSI

DESIGN AREA REDUCTION - NFPA FIG. 11.2.3.2.3.1
 $Y = -3(X) + 55$ $X = 18'-7.5"$ (HEIGHT)
 $Y = -3(18.625) + 55 = 27.0625$
 CEILING HEIGHT = 18'-7.5"
 $Y = 27.0625$ ALLOWABLE REDUCTION
 REMOTE AREA = 1,084 SQ.FT.
 ACTUAL REMOTE AREA = 1,190 SQ.FT.

OBSTRUCTED CONSTRUCTION SPRINKLER HEAD TO BE LOCATED 22" MAX. BELOW THE ROOF DECK

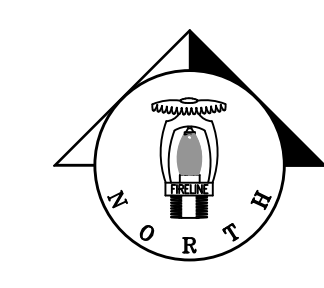
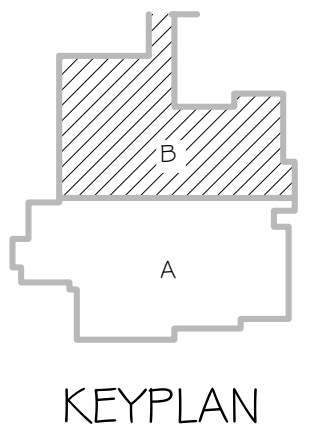
FINAL SPRINKLER LAYOUT INCLUDING HEADS BELOW DUCTS & OBSTRUCTIONS >48" WILL BE UPDATED AFTER COORDINATION - PROVIDED AS "AS-BUILT" MODIFICATION ROOMS 151 / 155 / 157 / 158 / 159

6" WATER LINE LEAD-IN / RISER LOCATION SEE DRAWING FP-1 FOR RISER DETAIL SEE SITE PLAN FOR UNDERGROUND MAIN CONT.



1ST FLOOR AREA "B" - 22,831 SQ.FT.

SCALE: 1/8" = 1'-0"



NO.	REVISIONS	BY	DATE
1	UPDATES PER STATE OF WISCONSIN DSPS REVIEW	RPK	1/12/19
2	UPDATES PER MIRON CONSTRUCTION REVIEW	RPK	2/7/19

SYM.	QTY.	SPRINKLERS	DESCRIPTION
○	7	TY313	5.6 200" TYCO TY-FRB 5.6K QR SC BRASS UPRIGHT
○	130	TY419	8.0 200" TYCO TY-FRB 8.0K QR SC BRASS UPRIGHT
○	23	TY913	5.6 150" TYCO TY-FRB 5.6K QR SC BRASS UPRIGHT
○	26	TY331	5.6 150" TYCO TY-FRB 5.6K QR SC CONCEALED WHITE PENDENT
○	33	TY419	8.0 150" TYCO TY-FRB 8.0K QR SC BRASS UPRIGHT
○	6	TY331	5.6 200" TYCO TY-FRB 5.6K QR SC STANDARD & DRY WHITE HORIZONTAL SIDEWALL

NI CET Level IV Automatic Sprinkler System Layout Certification #79357
 Richard P. Kossler

FIRELINE
 SPRINKLER CORPORATION

5336 Cleburn Drive
 Appleton, WI 54913
 WI Sprinkler Contractor #231813
 MI Sprinkler Contractor #7113153
 IL Sprinkler Contractor #SC0083

Office: (920) 757-9590
 Fax: (920) 757-9591

IA Sprinkler Contractor #125-0798
 ND Sprinkler Contractor #33891549
 MO Sprinkler Contractor #F00726044

TITLE		PROPERTY	
1ST FLOOR AREA "B" SPRINKLER PLAN		BROWN COUNTY STEM INNOVATION CENTER GREEN BAY, WISCONSIN	
DRAWN	RPK	CHK'D	DATE
SCALE	1/8" = 1'-0"	CAD FILE	XXXXXXXXX.DWG

SHEET/DRAWING NO.		PROJECT	
FP-3 OF 5		11670-18	