

GARAGE DRY SYSTEMS - MATERIALS TO BE USED
 GARAGE PIPING TO BE SCH. 40 GALVANIZED STEEL PIPE
 GARAGE HANGER ROD TO BE STAINLESS STEEL
 GARAGE HANGER RINGS TO BE ZINC COATED

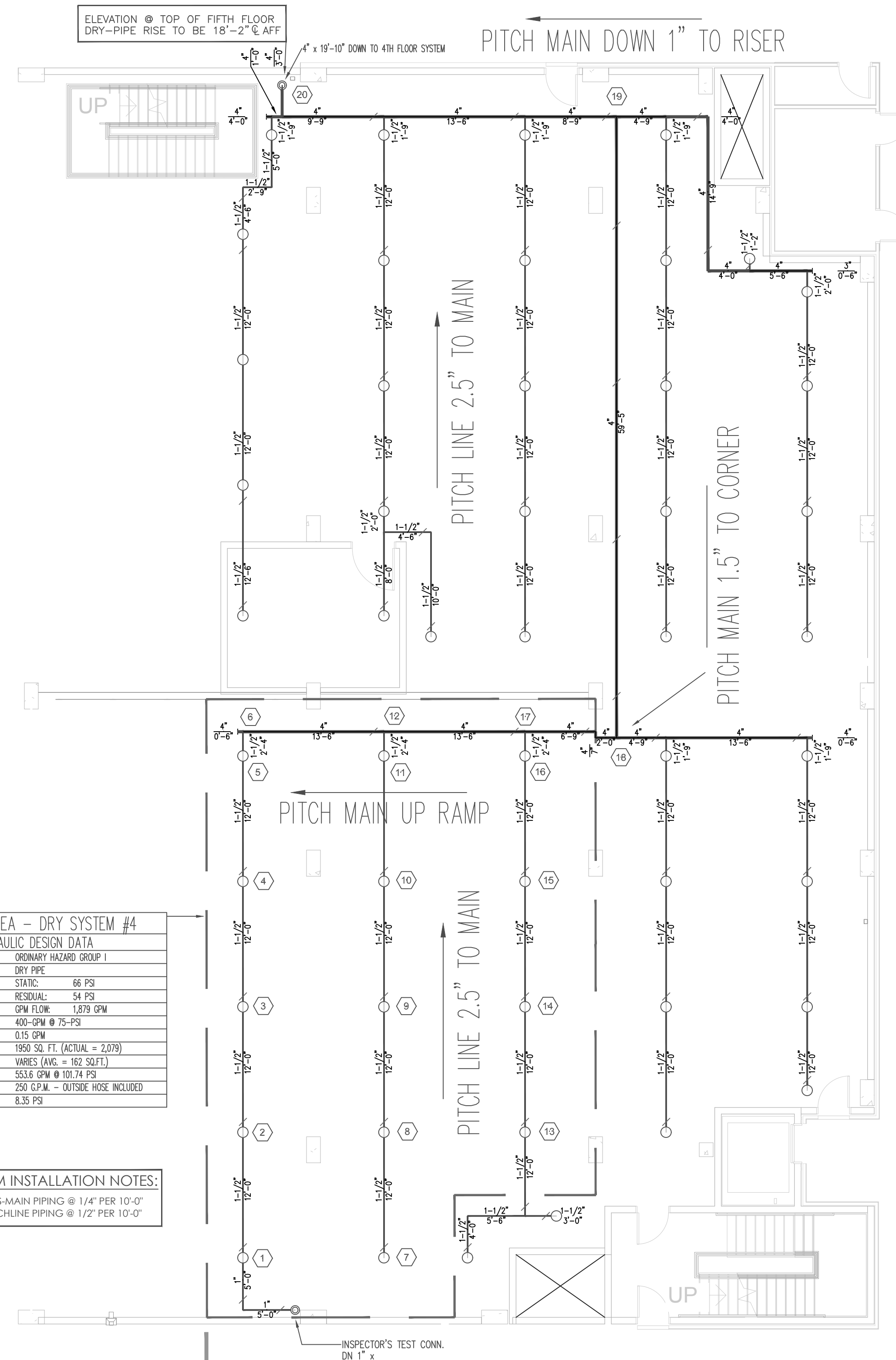
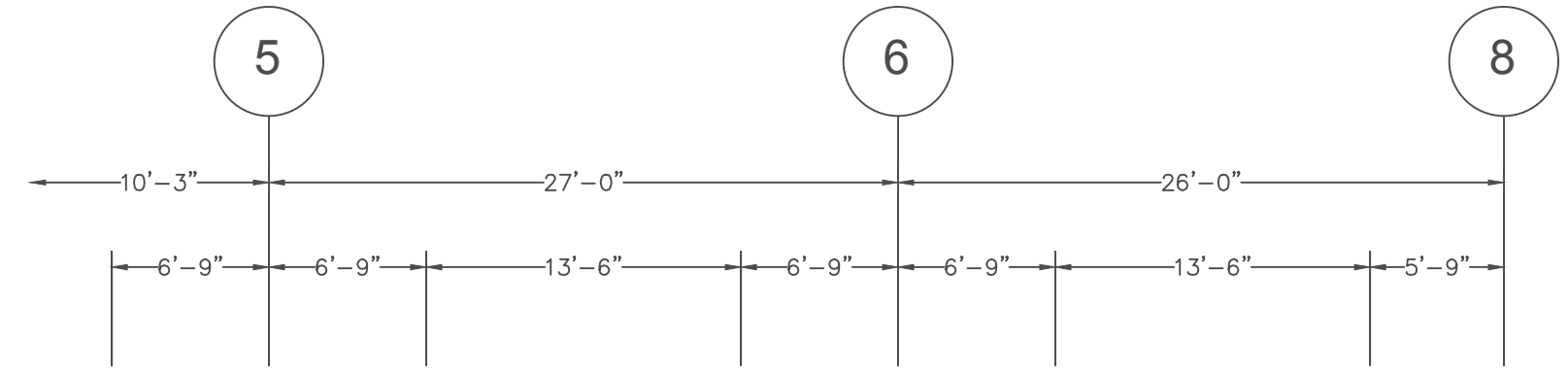
REPRESENTS FIFTH FLOOR
 SYSTEM IS EXTENSION FROM FOURTH FLOOR

6TH FLOOR DECK (TOD) ABOVE @ 62'-61/2"
 6TH FLOOR (TOD) = 19'-10" ABOVE 5TH FLOOR

HANGER SPACING CHART								
PIPE TYPE	1"	1 1/4"	1 1/2"	2"	2 1/2"	3"	4"	6"
BLACK STEEL SCH. 10	12'-0"	12'-0"	15'-0"	15'-0"	15'-0"	15'-0"	15'-0"	15'-0"
BLACK STEEL SCH. 40	12'-0"	12'-0"	15'-0"	15'-0"	15'-0"	15'-0"	15'-0"	15'-0"
CPVC	6'-0"	6'-6"	7'-0"	8'-0"	9'-0"	10'-0"		

GALLONAGE - DRY SYSTEM #4:
 430 GALLONS

PARKING GARAGE - SPRINKLER HEAD SPACING CHART			
AREA	SPRINKLER HEAD	MAX. SPACING	MAX. DISTANCE OFF WALL
PARKING GARAGE	TYCO EC-11 UPRIGHT	14' x 14' = 196 SQ. FT.	7'-0"



REMOTE AREA - DRY SYSTEM #4	
HYDRAULIC DESIGN DATA	
HAZARD CLASSIFICATION	ORDINARY HAZARD DROP 1
SYSTEM TYPE	DRY PIPE
WATER SUPPLY	STATIC: 60 PSI
	RESIDUAL: 54 PSI
	GPM FLOW: 1,875 GPM
FIRE PUMP	400-GPM @ 75-PSI
DENSITY	0.15 GPM
REMOTE AREA	1950 SQ. FT. (ACTUAL = 2,070)
COVERAGE PER SPRINKLER	WABES (AUG. = 162 SQ.FT.)
SYSTEM BRAND	555E GPM @ 102.74 PSI
HOSE ALLOWANCE	250' E.P.M. - OUTSIDE ROSE INCLUDED
PS CUSHION	8.35 PSI

DRY SYSTEM INSTALLATION NOTES:
 • PITCH CROSS-MAIN PIPING @ 1/4" PER 10'-0"
 • PITCH BRANCHLINE PIPING @ 1/2" PER 10'-0"

OPEN TO ABOVE BEYOND THIS LINE

END OF GARAGE

FIFTH FLOOR GARAGE - DRY SYSTEM #4 EXTENSION
 SCALE: 1/8" = 1'-0"
 PIPE @ 9'-0" A.F.F. UNO

NICET Level IV Automatic Sprinkler
 System Layout Certification #79357
 Richard P. Kossler

Riverside @ Bishops Gate
 Jacksonville, Florida
 BUILDING 1000 - LEVEL 5 GARAGE #4
 DRY-PIPE SYSTEM

SFP
 Southern Fire Protection
 2220 COUNTY RD. 210 WEST
 SUITE NO. 108-139
 JACKSONVILLE, FL 32259
 PH: 904-552-1527

NO.	DATE	BY	DESCRIPTION
1	8/27/16		ISSUE FOR PERMIT

REV.	DATE	DESCRIPTION
0		

SCALE: 1/8" = 1'-0"
 JOB NUMBER: 690
 DATE: 8/1/2018