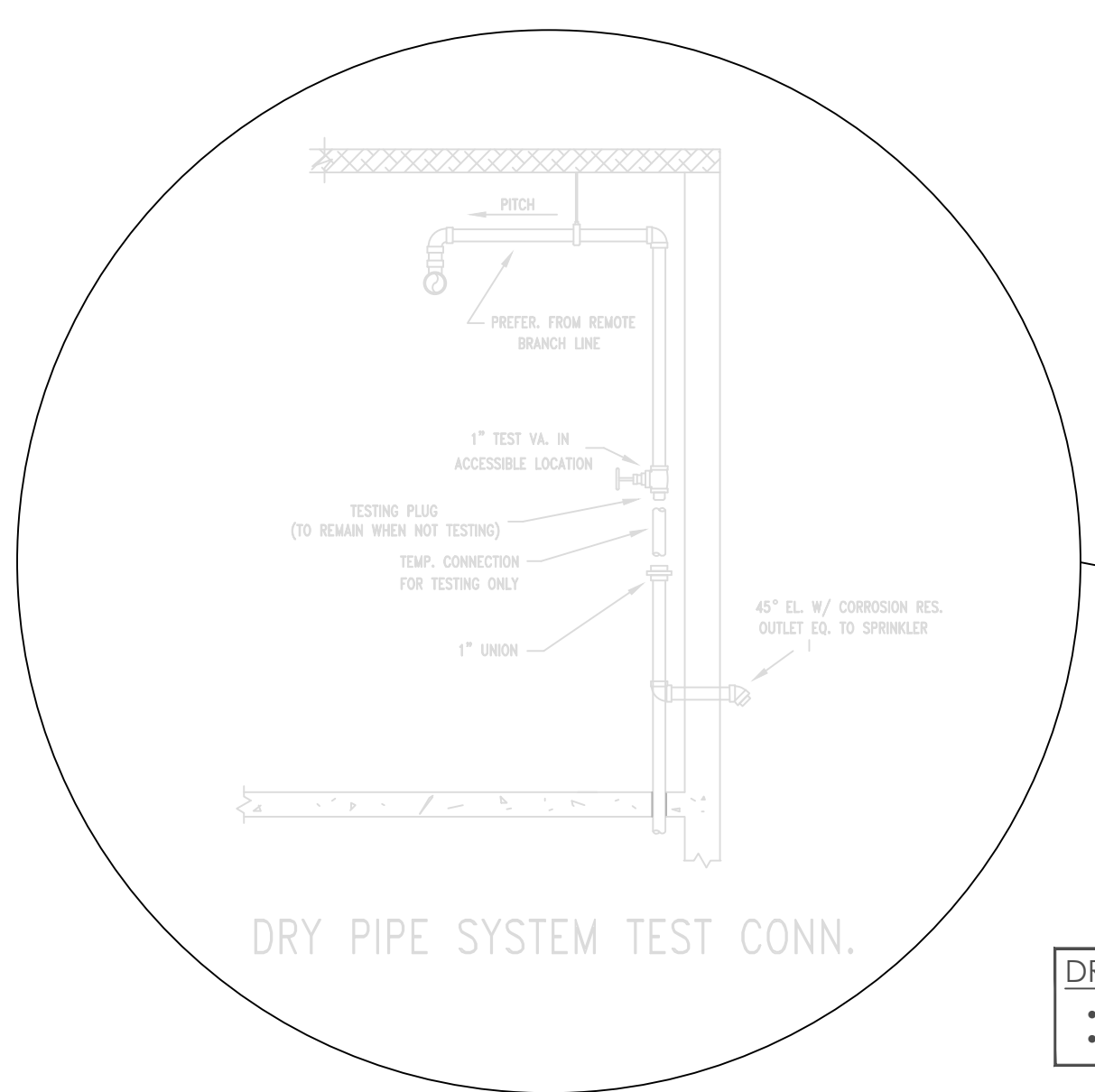


**GARAGE DRY SYSTEMS - MATERIALS TO BE USED**  
 GARAGE PIPING TO BE SCH. 10 GALVANIZED STEEL PIPE  
 GARAGE HANGER ROD TOP BE STAINLESS STEEL  
 GARAGE HANGER RINGS TO BE ZINC COATED

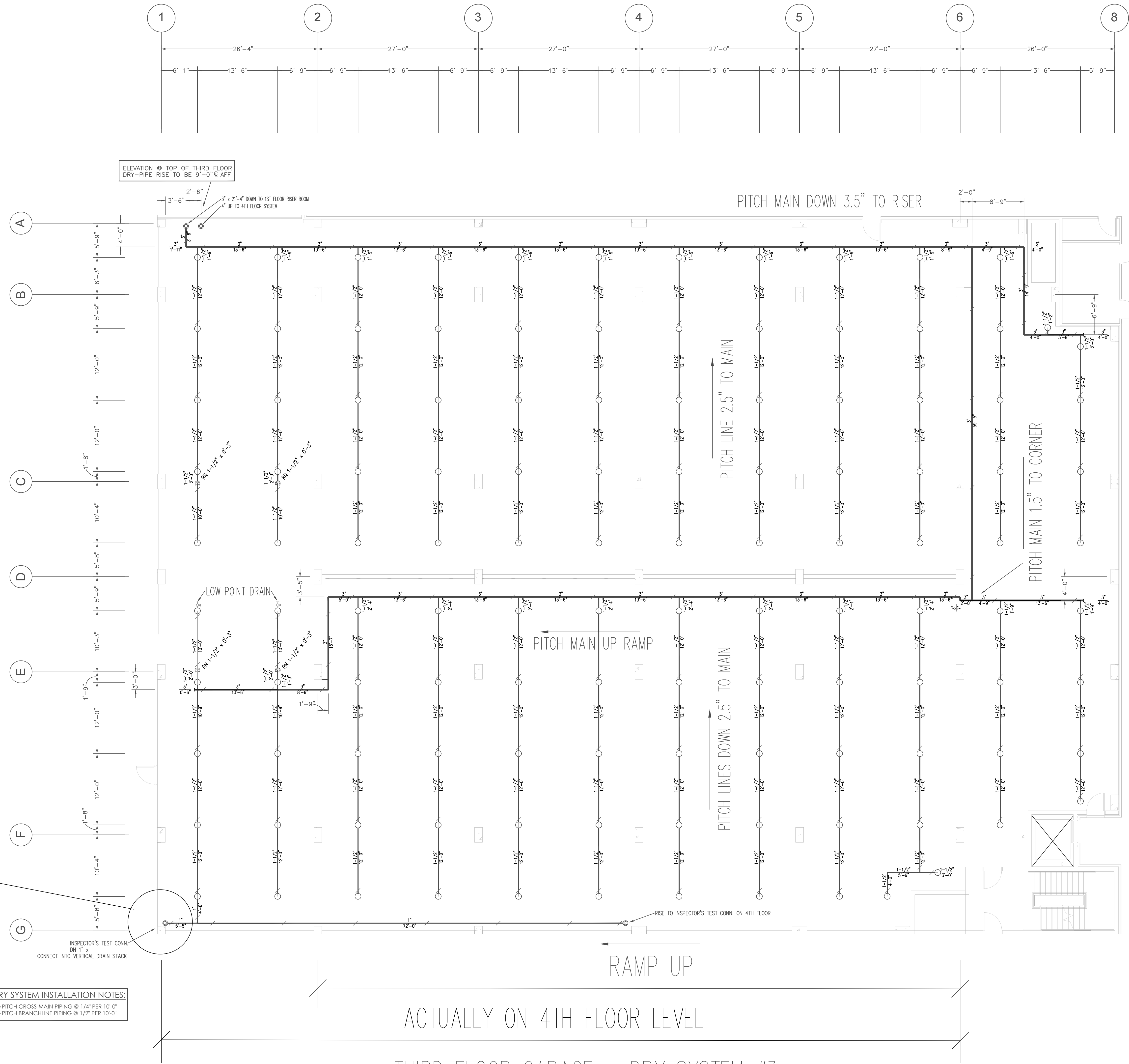
REPRESENTS THIRD FLOOR & PART OF FOURTH FLOOR

4TH FLOOR DECK (TOD) ABOVE @ 32'-01 1/2"  
 4TH FLOOR (TOD) = 10'-8" ABOVE 3RD FLOOR

HANGER SPACING CHART								
PIPE TYPE	1"	1 1/4"	1 1/2"	2"	2 1/2"	3"	4"	6"
BLACK STEEL SCH. 10	12'-0"	12'-0"	15'-0"	15'-0"	15'-0"	15'-0"	15'-0"	15'-0"
BLACK STEEL SCH. 40	12'-0"	12'-0"	15'-0"	15'-0"	15'-0"	15'-0"	15'-0"	15'-0"
CPVC	6'-0"	6'-6"	7'-0"	8'-0"	9'-0"	10'-0"		



**DRY SYSTEM INSTALLATION NOTES:**  
 • PITCH CROSS-MAIN PIPING @ 1/4" PER 10'-0"  
 • PITCH BRANCHLINE PIPING @ 1/2" PER 10'-0"



**GALLONAGE - DRY SYSTEM #3:**  
 370 GALLONS

PARKING GARAGE - SPRINKLER HEAD SPACING CHART			
AREA	SPRINKLER HEAD	MAX. SPACING	MAX. DISTANCE OFF WALL
PARKING GARAGE	TYCO EC-11 UPRIGHT	14' x 14' = 196 SQ. FT.	7'-0"

NICET Level IV Automatic Sprinkler System Layout Certification #79357  
 Richard P. Kossler

Riverside @ Bishops Gate  
 Jacksonville, Florida  
 BUILDING 1000 - LEVEL 3 GARAGE  
 DRY-PIPE SYSTEM #3

**SFP**  
 Southern Fire Protection  
 2220 COUNTY RD. 210 WEST  
 SUITE NO. 108-139  
 JACKSONVILLE, FLORIDA 32209  
 TEL: 904-552-1527

NO.	DATE	BY	DESCRIPTION
	8/21/16		ISSUE FOR PERMIT

SYMBOL	QUANTITY	DESCRIPTION
○	119	1 1/2" E.C.T. OR EXTENDED ENDING BRASS UPRIGHT
○		TOTAL NUMBER OF SYSTEMS: 1
○		TOTAL NUMBER OF ACCESSIBLE SYSTEMS: 1
○		DRY PIPE SYSTEM (N.P.T.)

SCALE: 1/8" = 1'-0"  
 JOB NUMBER: 690  
 DATE: 8/1/2018