

# INTERSTITIAL SPACE NOTE:

ENTIRE INTERSTITIAL CAVITY TO BE FILLED  
W/ NON-COMBUSTIBLE INSULATION BY G.C.  
PER NFPA #13, SECTION 8.15.1.2.7  
SPINKLER PROTECTION IS NOT REQUIRED

HANGER SPACING CHART	
PIPE TYPE	1"   1 1/4"   1 1/2"   2"   2 1/2"   3"   4"   6"
BLACK STEEL SCH. 40	12'-0"   12'-0"   15'-0"   15'-0"   15'-0"   15'-0"   15'-0"   15'-0"
BLACK STEEL SCH. 40	12'-0"   12'-0"   15'-0"   15'-0"   15'-0"   15'-0"   15'-0"   15'-0"
CPVC	6'-0"   6'-6"   7'-0"   8'-0"   9'-0"   10'-0"

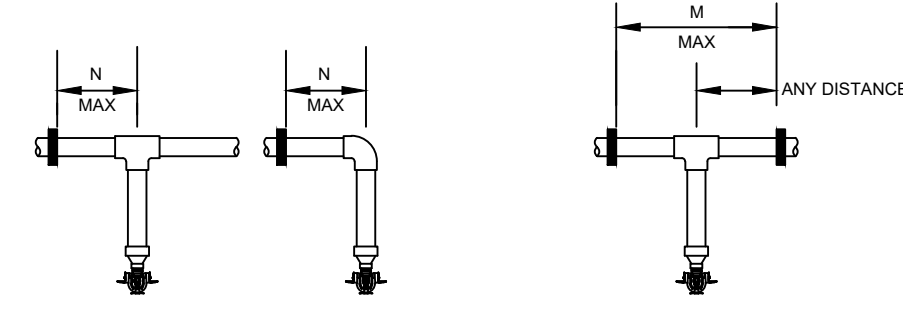
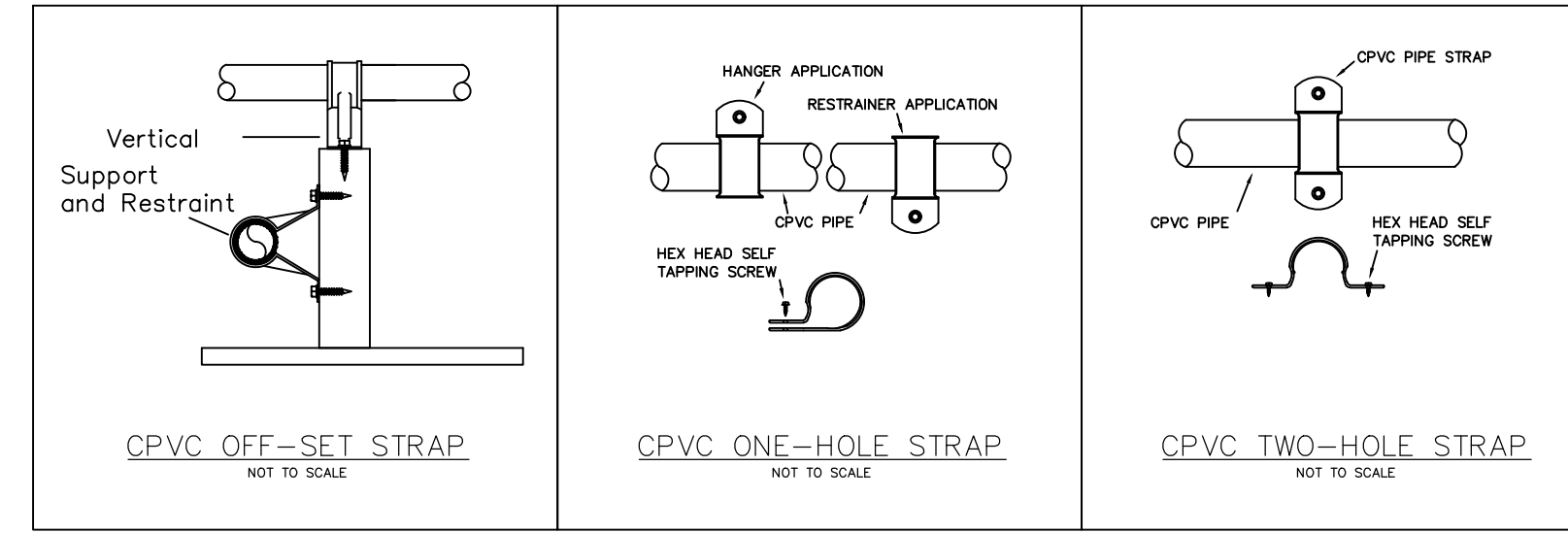
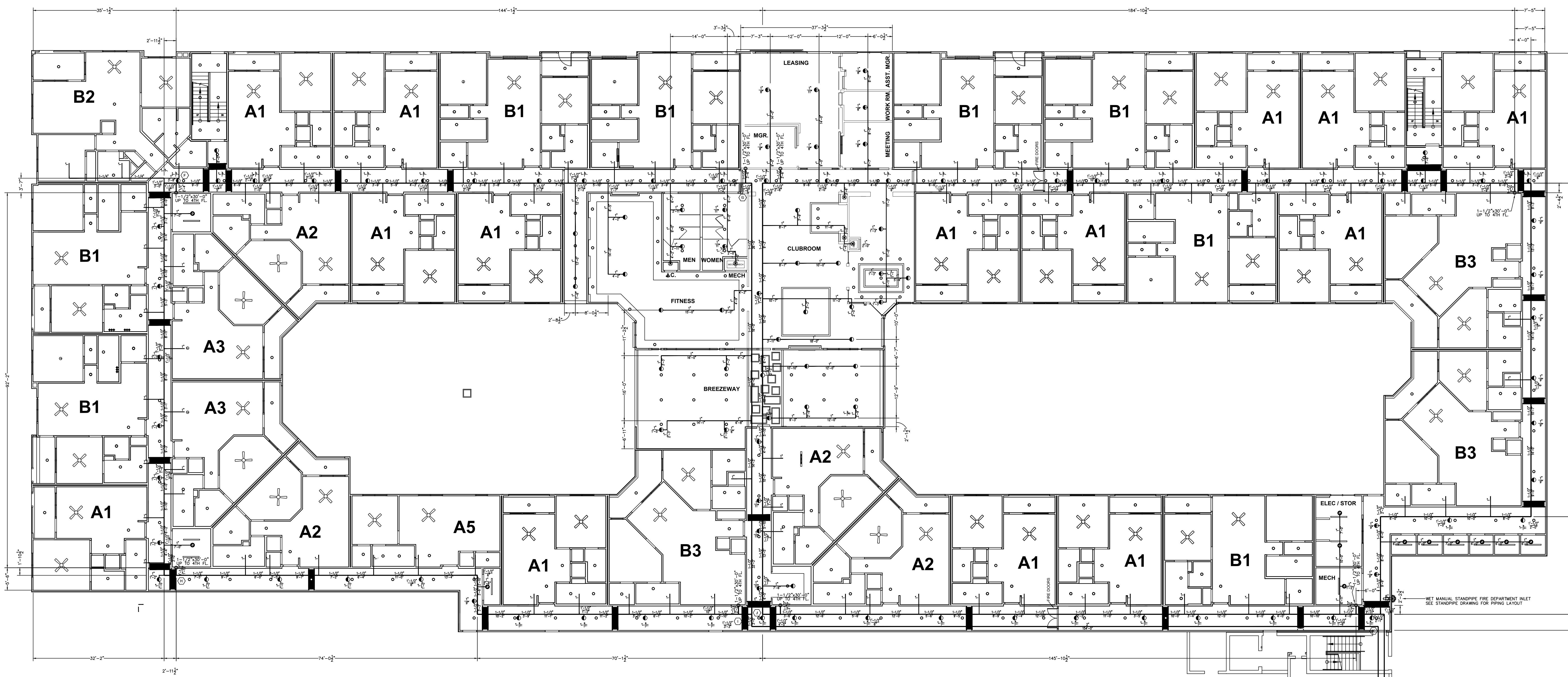
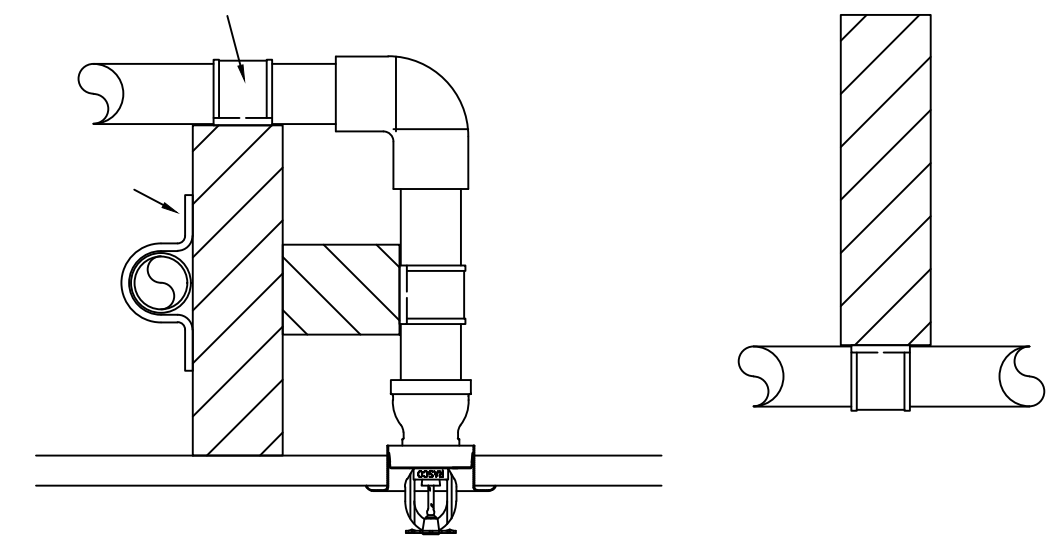


TABLE A - ONE POINT RESTRAINT		TABLE B - TWO POINT RESTRAINT	
NOMINAL PIPE SIZE	LESS THAN 100 PSI	NOMINAL PIPE SIZE	LESS THAN 100 PSI
3/4"	6'-0"	3/4"	6'-0"
1"	6'-6"	1"	6'-6"
1 1/4"	7'-0"	1 1/4"	7'-0"
1 1/2"	7'-6"	1 1/2"	7'-6"
2"	8'-0"	2"	8'-0"
2 1/2"	8'-6"	2 1/2"	8'-6"
3"	9'-0"	3"	9'-0"
4"	9'-6"	4"	9'-6"
6"	10'-0"	6"	10'-0"

BRANCH LINES SHALL BE BRACED AT A DISTANCE FROM A TEE OR ELBOW TO PREVENT LIFT OF SPRINKLERS AS SHOWN IN TABLES "R" OR "S"



AREAS	SPRINKLER HEAD	MAX. SPACING	MAX. DISTANCE OFF WALL
RESIDENTIAL - CORRIDOR	TYCO EC-8.8.0K RECESSED PENDENT	16' x 16' = 256 SQ. FT.	8'-0"
RESIDENTIAL - MECHANICAL / ELECTRIC (ALL FLOORS)	TYCO FBH 5.0K RECESSED PENDENT	15' x 16' = 240 SQ. FT.	8'-0"
RESIDENTIAL - UNITS LEVELS 1-5 (ROOMS)	TYCO SERIES LFI 5.6K RESIDENTIAL PENDENT	16' x 16' = 256 SQ. FT.	8'-0"
RESIDENTIAL - UNITS LEVELS 1-5 (EXT. TERRACE BALCONY)	SGRUB Q1 - 1" NPT 5.0K RESIDENTIAL DRY SIDEWALL	16' x 16' = 256 SQ. FT.	9'-0"



1ST FLOOR - 41,400 SQ.FT.

SCALE: 3/32" = 1'-0"  
INSTALL PIPING @ 11'-0" O.C. AFF

FIRE PUMP AND RISER ROOM FOR RESIDENTIAL SYSTEMS. SEE FIRE PUMP DETAIL FOR PIPING LAYOUT.  
FIRE PUMP / RISER  
FIRE DEPARTMENT CONNECTION. SEE FIRE PUMP DRAWING FOR PIPING LAYOUT.  
6" FIRE PROTECTION. WATER SUPPLY LEAD IN FOR RESIDENTIAL SYSTEMS. SEE SITE PLAN FOR CONTINUATION.

NICET Level IV Automatic Sprinkler System Layout Certification #79357  
Richard P. Kossler

1444 HOME STREET  
Jacksonville, Florida  
LEVEL 1 SPRINKLER

SWIFT  
Sustainable Fire Protection  
2220 COUNTY RD. 210 WEST  
SUITE NO. 106-139  
JACKSONVILLE, FLORIDA  
PH: 904-450-5207

NO.	DATE	DESCRIPTION
1	11/27/18	GENERAL WORKING

NO.	DATE	DESCRIPTION	BY	CHKD.
1	11/27/18	GENERAL WORKING		

SCALE: 3/32" = 1'-0"  
JOB NUMBER: 698  
DATE: 10/30/2018

FP-4  
4 of 9