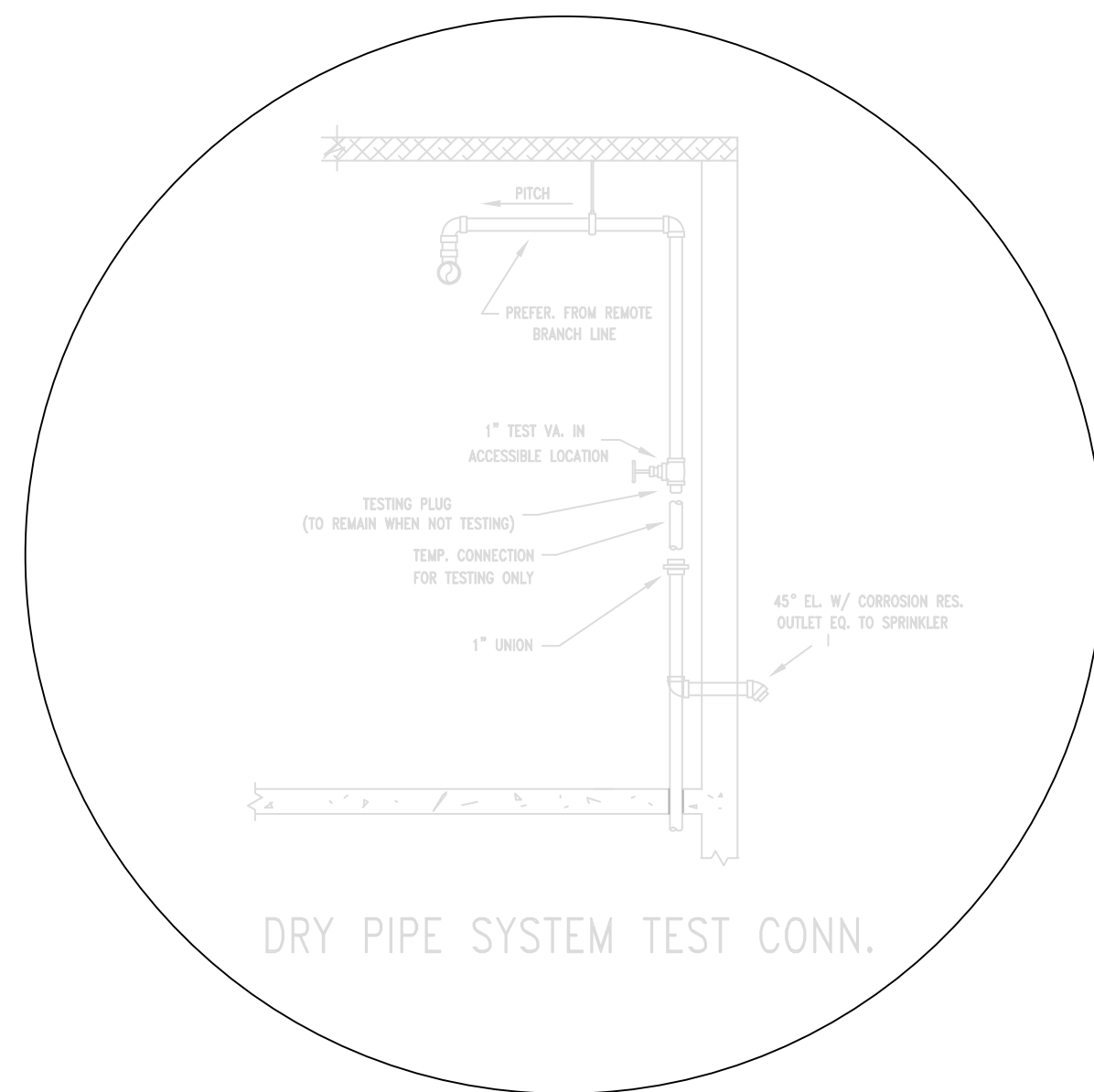


GARAGE DRY SYSTEMS - MATERIALS TO BE USED
 GARAGE PIPING TO BE SCH. 40 GALVANIZED STEEL PIPE
 GARAGE HANGER ROD TO BE STAINLESS STEEL
 GARAGE HANGER RINGS TO BE ZINC COATED

REPRESENTS SECOND FLOOR & PART OF THIRD FLOOR

3RD FLOOR DECK (TOD) ABOVE @ 21'-41/2"
 3RD FLOOR (TOD) = 10'-8" ABOVE 2ND FLOOR

HANGER SPACING CHART								
PIPE TYPE	1"	1 1/4"	1 1/2"	2"	2 1/2"	3"	4"	6"
BLACK STEEL SCH. 10	12'-0"	12'-0"	15'-0"	15'-0"	15'-0"	15'-0"	15'-0"	15'-0"
BLACK STEEL SCH. 40	12'-0"	12'-0"	15'-0"	15'-0"	15'-0"	15'-0"	15'-0"	15'-0"
CPVC	6'-0"	6'-6"	7'-0"	8'-0"	9'-0"	10'-0"		

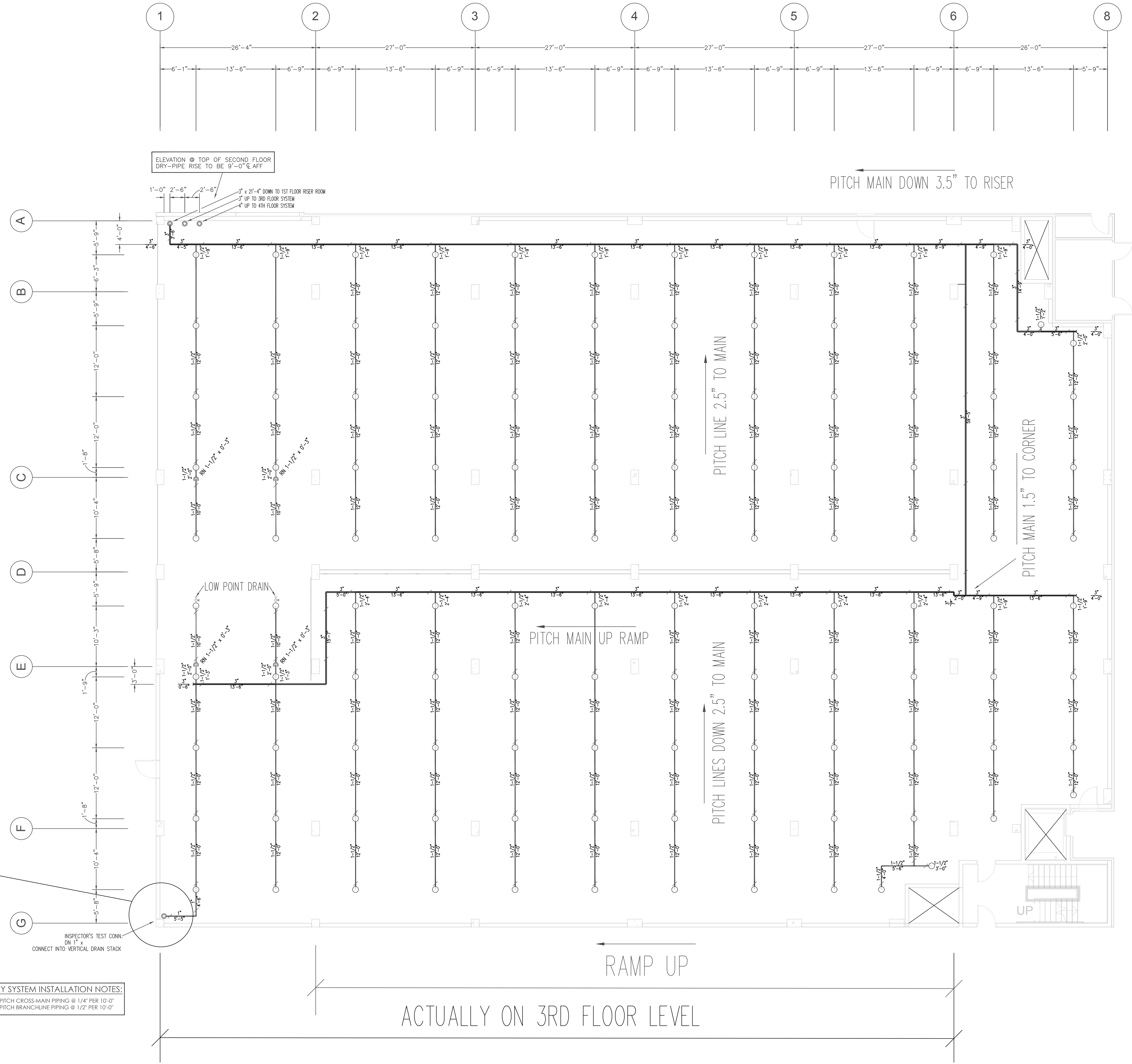


DRY SYSTEM INSTALLATION NOTES:
 • PITCH CROSS-MAIN PIPING @ 1/4" PER 10'-0"
 • PITCH BRANCHLINE PIPING @ 1/2" PER 10'-0"

PARKING GARAGE - SPRINKLER HEAD SPACING CHART

AREA	SPRINKLER HEAD	MAX. SPACING	MAX. DISTANCE OFF WALL
PARKING GARAGE	TYCO EC-11 UPRIGHT	14' x 14' = 196 SQ. FT.	7'-0"

GALLONAGE - DRY SYSTEM #2:
 360 GALLONS



SECOND FLOOR GARAGE - DRY SYSTEM #2

SCALE: 1/8" = 1'-0"
 PIPE @ 9'-0" A.F.F UNO

NICET Level IV Automatic Sprinkler
 System Layout Certification #79357
 Richard P. Kossler

Riverside @ Bishops Gate
 Jacksonville, Florida

BUILDING 1000 - LEVEL 2 GARAGE
 DRY-PIPE SYSTEM #2

Summit Fire Protection
 2220 COUNTY RD. 210 WEST
 SUITE NO. 108-130
 JACKSONVILLE, FLORIDA 32259
 TEL: 904-452-9227

NO.	DATE	BY	DESCRIPTION
1	8/27/16		ISSUE FOR PERMIT

SYMBOL	QUANTITY	DESCRIPTION
○	119	1" TEST VALVE IN ACCESSIBLE LOCATION

SCALE: 1/8" = 1'-0"
 JOB NUMBER: 690
 DATE: 8/1/2018