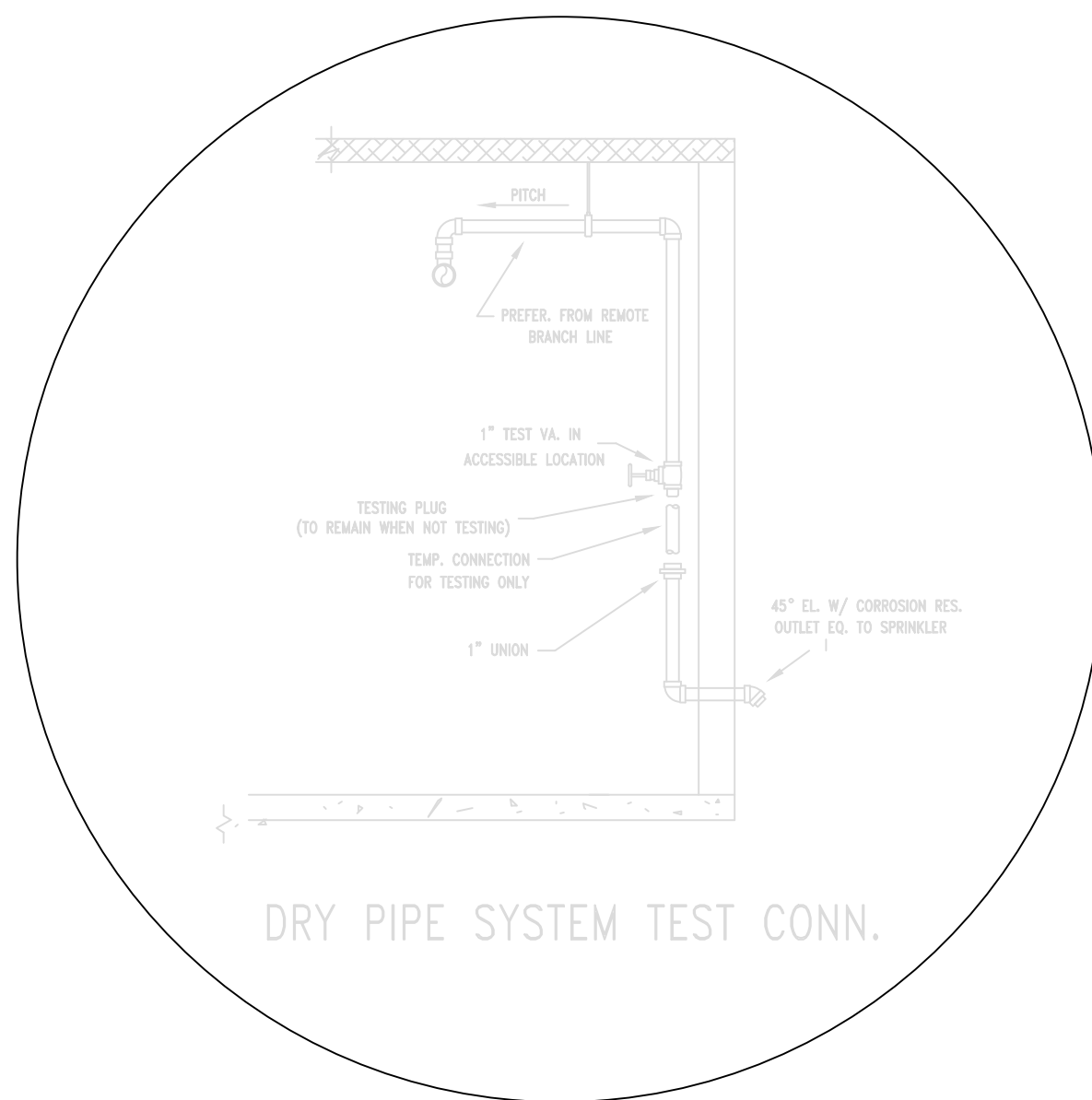


GARAGE DRY SYSTEMS - MATERIALS TO BE USED
 GARAGE PIPING TO BE SCH. 40 GALVANIZED STEEL PIPE
 GARAGE HANGER ROD TOP BE STAINLESS STEEL
 GARAGE HANGER RINGS TO BE ZINC COATED

REPRESENTS FIRST FLOOR & PART OF SECOND FLOOR

2ND FLOOR DECK (TOD) ABOVE @ 10'-8 1/2"
 2ND FLOOR (TOD) = 10'-8 1/2" ABOVE 1ST FLOOR

HANGER SPACING CHART							
PIPE TYPE	1"	1 1/4"	1 1/2"	2"	2 1/2"	3"	6"
BLACK STEEL SCH. 10	12'-0"	12'-0"	15'-0"	15'-0"	15'-0"	15'-0"	15'-0"
BLACK STEEL SCH. 40	12'-0"	12'-0"	15'-0"	15'-0"	15'-0"	15'-0"	15'-0"
CPVC	6'-0"	6'-6"	7'-0"	8'-0"	9'-0"	10'-0"	

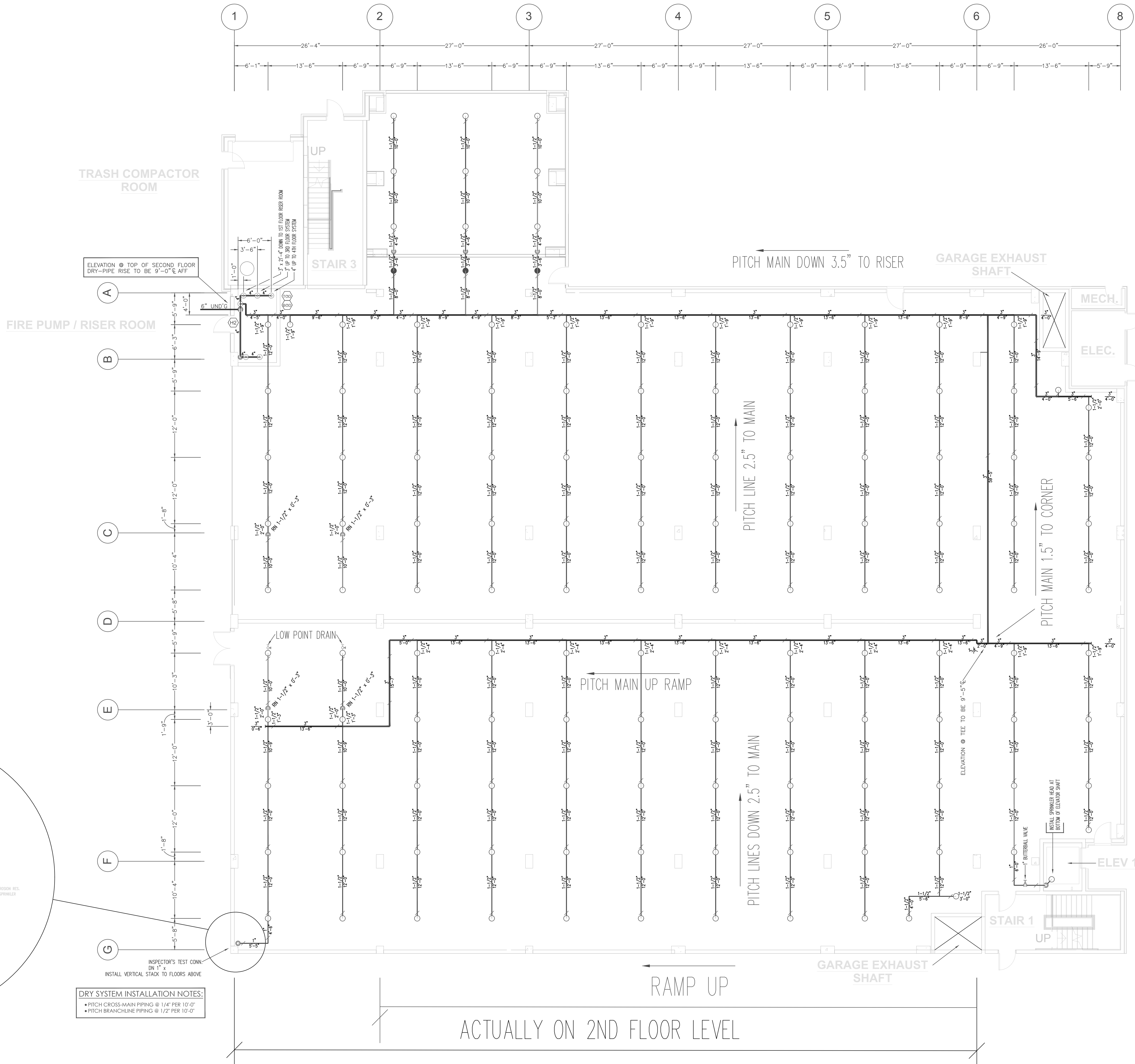


INSPECTOR'S TEST CONN.
 ON 1" x 1" x 1" VALVE
 INSTALL VERTICAL STACK TO FLOORS ABOVE

DRY SYSTEM INSTALLATION NOTES:
 • PITCH CROSS-MAIN PIPING @ 1/4" PER 10'-0"
 • PITCH BRANCHLINE PIPING @ 1/2" PER 10'-0"

PARKING GARAGE - SPRINKLER HEAD SPACING CHART			
AREA	SPRINKLER HEAD	MAX. SPACING	MAX. DISTANCE OFF WALL
PARKING GARAGE	TYCO EG-11 UPRIGHT	14' x 14' = 196 SQ. FT.	7'-0"

GALLONAGE - DRY SYSTEM #1:
 350 GALLONS



FIRST FLOOR GARAGE - DRY SYSTEM #1

SCALE: 1/8" = 1'-0"
 PIPE @ 9'-0" A.F.F. UNO

NICET Level IV Automatic Sprinkler
 System Layout Certification #79357
 Richard P. Kossler

Riverside @ Bishops Gate
 Jacksonville, Florida

BUILDING 1000 - LEVEL 1 GARAGE
 DRY-PIPE SYSTEM #1

Source Fire Protection
 2220 COUNTY RD. 210 WEST
 SUITE NO. 108-130
 JACKSONVILLE, FL 32209
 TEL: 904-529-1027

REVISIONS & APPROVALS	
NO.	DATE BY DESCRIPTION
1	9/27/16

DESCRIPTION		TOTAL NUMBER OF ACCESSIBLE	
SY. QTY.	DESCRIPTION	SY. QTY.	DESCRIPTION
1	DRY PIPE SYSTEM	1	DRY PIPE SYSTEM

SCALE: 1/8" = 1'-0"
 JOB NUMBER: 690
 DATE: 8/1/2018