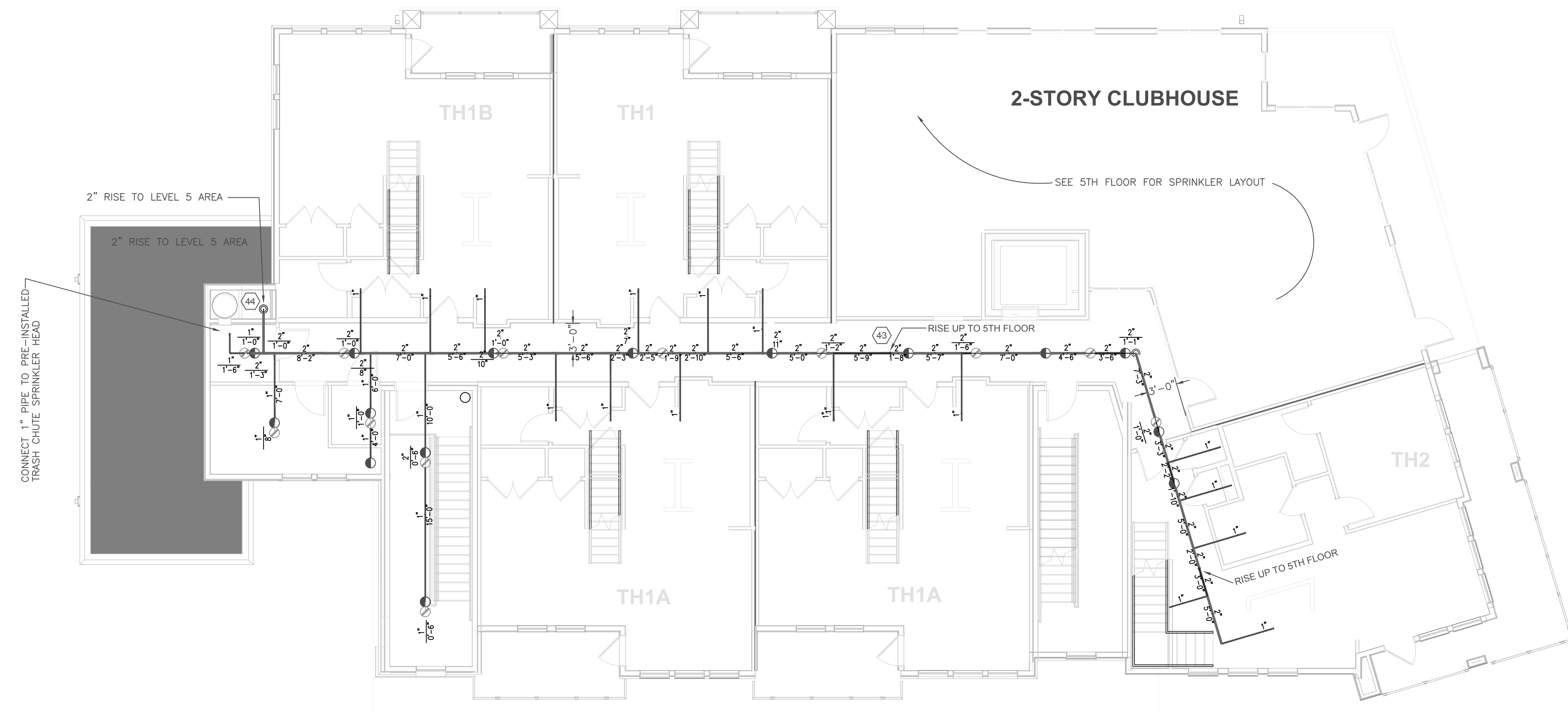


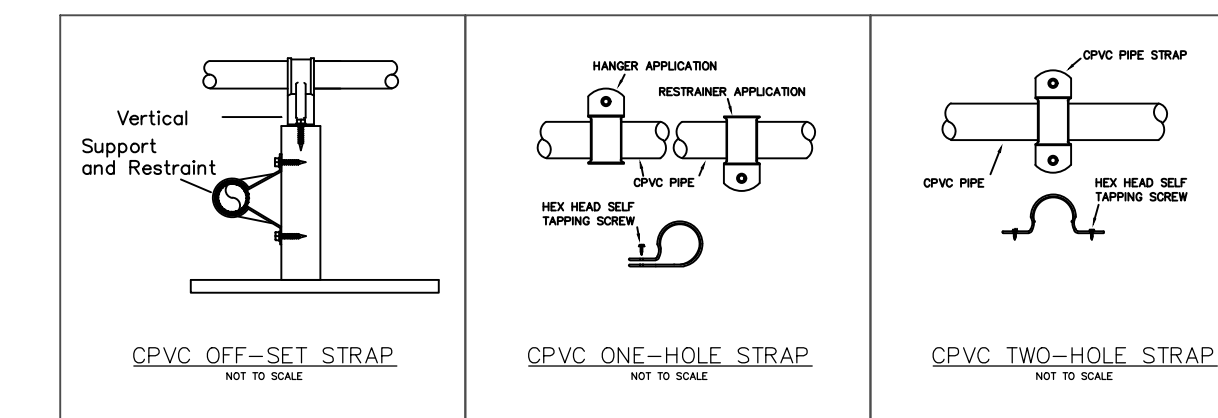
BUILDING 2000 LEVEL 3

SCALE: 1/8"=1'-0"



BUILDING 2000 LEVEL 4

SCALE: 1/8"=1'-0"



HANGER SPACING CHART	
PIPE TYPE	SPACING
1" 1.14"	1.14'
2" 2.12"	2.12'
3" 3.10"	3.10'
4" 4.08"	4.08'
6" 6.06"	6.06'
8" 8.04"	8.04'

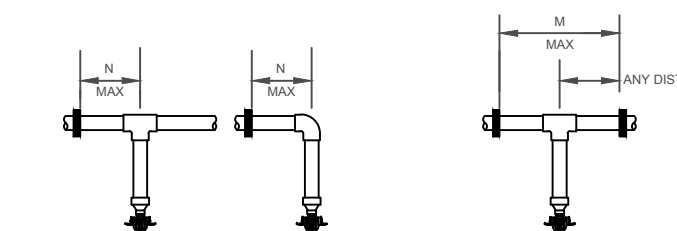
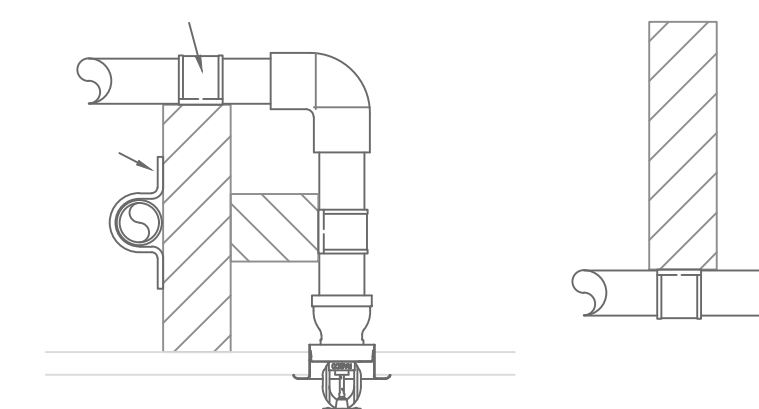


TABLE 4		TABLE 5	
ONE-HOLE RECESSED		TWO-HOLE RECESSED	
NOMINAL PIPE SIZE	MINIMUM HANGER SPACING	NOMINAL PIPE SIZE	MINIMUM HANGER SPACING
1/2"	12"	1/2"	12"
3/4"	18"	3/4"	18"
1"	24"	1"	24"
1 1/4"	30"	1 1/4"	30"
1 1/2"	36"	1 1/2"	36"
2"	48"	2"	48"
2 1/2"	60"	2 1/2"	60"
3"	72"	3"	72"
4"	96"	4"	96"
6"	144"	6"	144"
8"	192"	8"	192"

SPRINKLER HANGERS SHALL BE SPACED AS SHOWN FROM A TIE OR ELBOW TO PREVENT LIFT OF SPRINKLER AS SHOWN IN TABLE 10 OF NFPA 13.



AREAS	SPRINKLER HEAD	MAX. SPACING	MAX. DISTANCE OFF-WALL
RESIDENTIAL - CORRIDOR	TYCO EC-8 8.0K RECESSED PENDENT	16' x 16' = 256 SQ. FT.	8'-0"
RESIDENTIAL - MECHANICAL / ELECTRIC (ALL FLOORS)	TYCO EC-8 8.0K RECESSED PENDENT	16' x 16' = 256 SQ. FT.	8'-0"
RESIDENTIAL - UNITS LEVELS 1 - 5 (BROOKS)	TYCO SERIES 1-F 5.6K RESIDENTIAL PENDENT	16' x 16' = 256 SQ. FT.	8'-0"
RESIDENTIAL - UNITS LEVELS 1 - 5 (EXTERIOR BALCONY)	GLOBE GL-1 3" NPT 5.6K RESIDENTIAL DRY SIDEWALL	16' x 16' = 256 SQ. FT.	8'-0"
RESIDENTIAL - INTERSTITIAL SPACES (ALL FLOORS)	TYCO 1-F 5.6K PENDENT	16' x 16' = 256 SQ. FT.	8'-0"

SEE 1000 BUILDING UNIT PLANS FOR PIPING AND SPRINKLER HEAD LAYOUT IN UNITS

Riverside Jacksonville @ Bishopgate
Jacksonville, Florida

2000 BUILDING - LEVELS 3&4 SPRINKLER

2220 COUNTY RD. 210 WEST
SUITE NO. 108-139
JACKSONVILLE, FL 32259
PH: 904-529-1527

NO.	DATE	BY	DESCRIPTION
1	8/27/16	ISSUE FOR PERMIT	

SYMBOL	DESCRIPTION
○	TYCO EC-8 8.0K RECESSED PENDENT
●	TYCO EC-8 8.0K RECESSED PENDENT
○	TYCO SERIES 1-F 5.6K RESIDENTIAL PENDENT
●	GLOBE GL-1 3" NPT 5.6K RESIDENTIAL DRY SIDEWALL
○	TYCO 1-F 5.6K PENDENT

SYMBOL	DESCRIPTION
○	TYCO EC-8 8.0K RECESSED PENDENT
●	TYCO EC-8 8.0K RECESSED PENDENT
○	TYCO SERIES 1-F 5.6K RESIDENTIAL PENDENT
●	GLOBE GL-1 3" NPT 5.6K RESIDENTIAL DRY SIDEWALL
○	TYCO 1-F 5.6K PENDENT

SCALE: 1/8" = 1'-0"
JOB NUMBER: 690
DATE: 8/1/2018

FP-6B
19 of 21