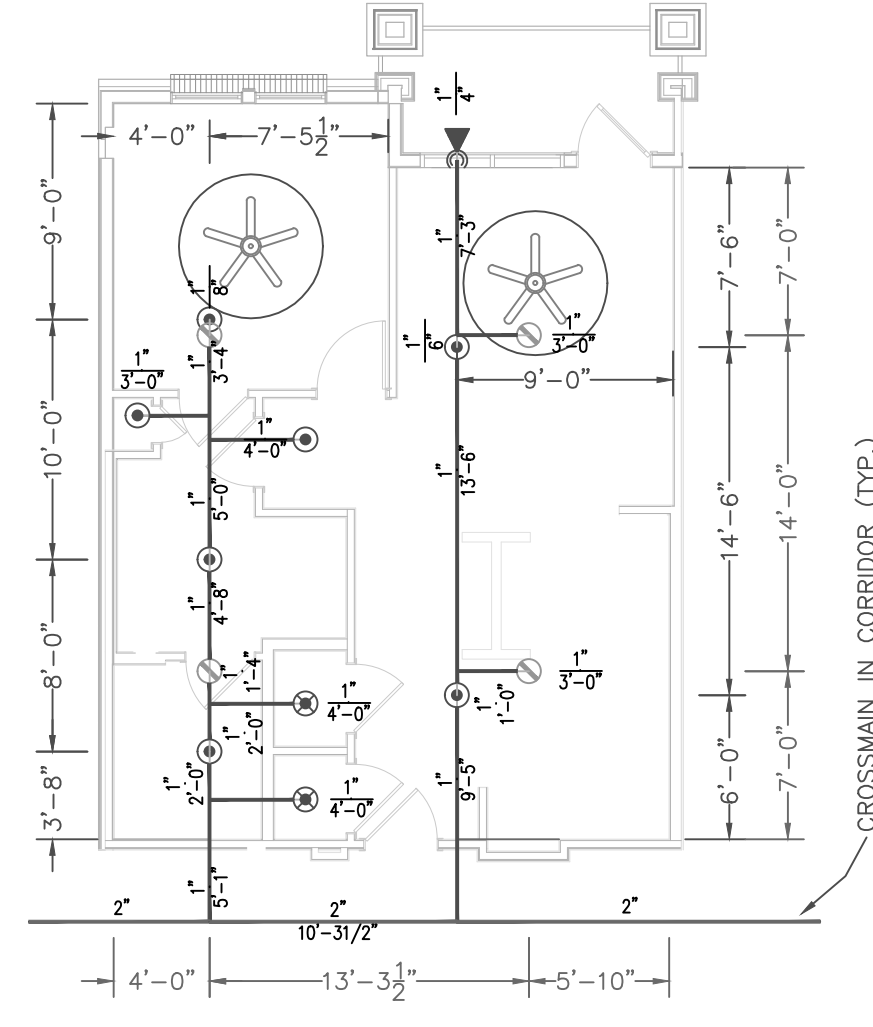
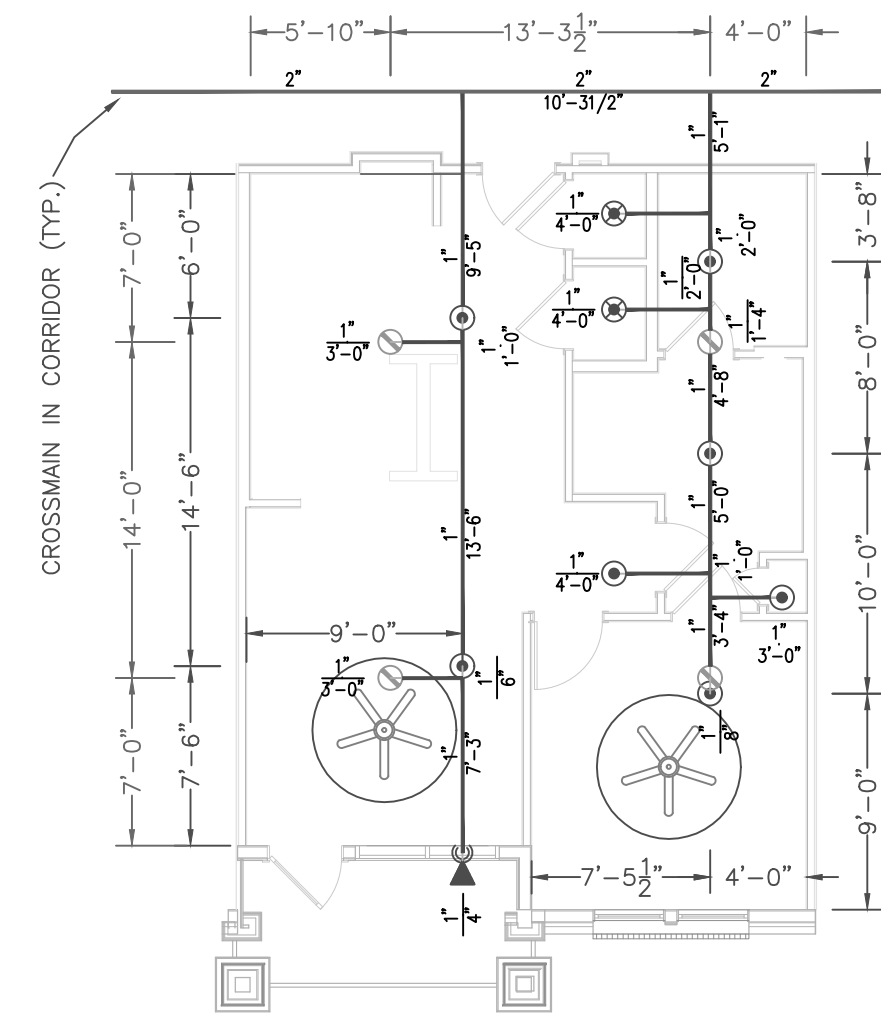


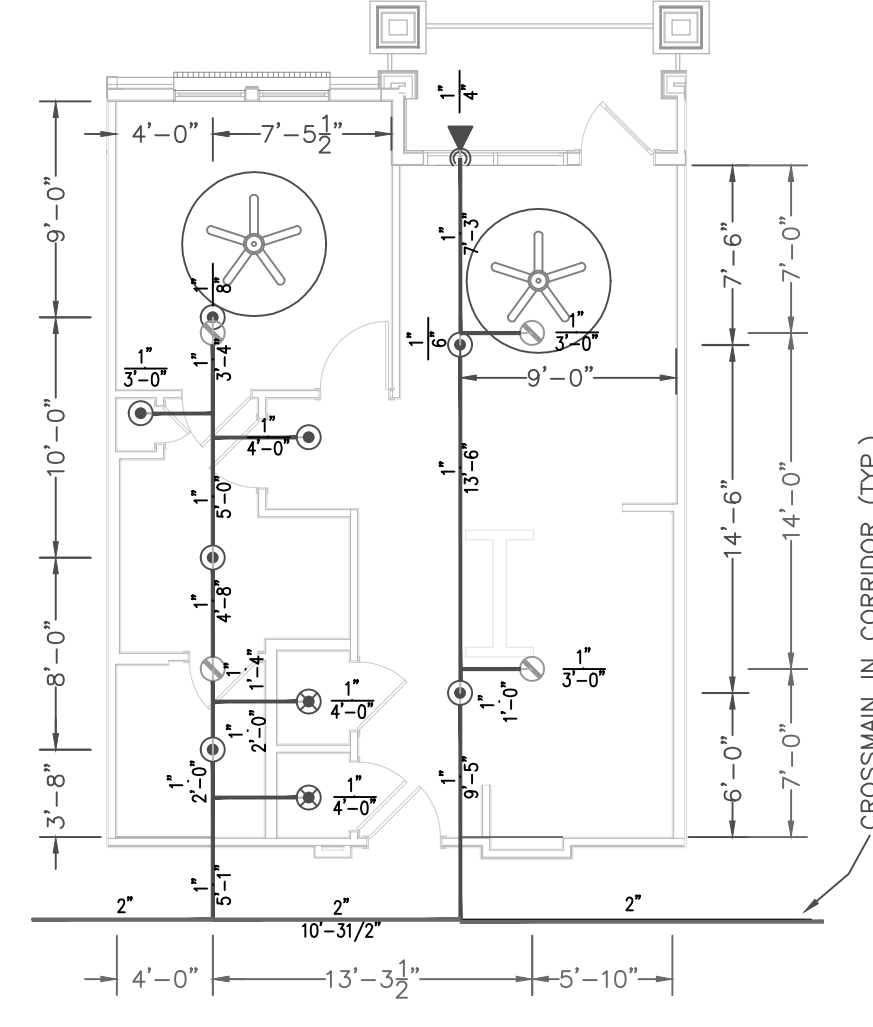
A1-s



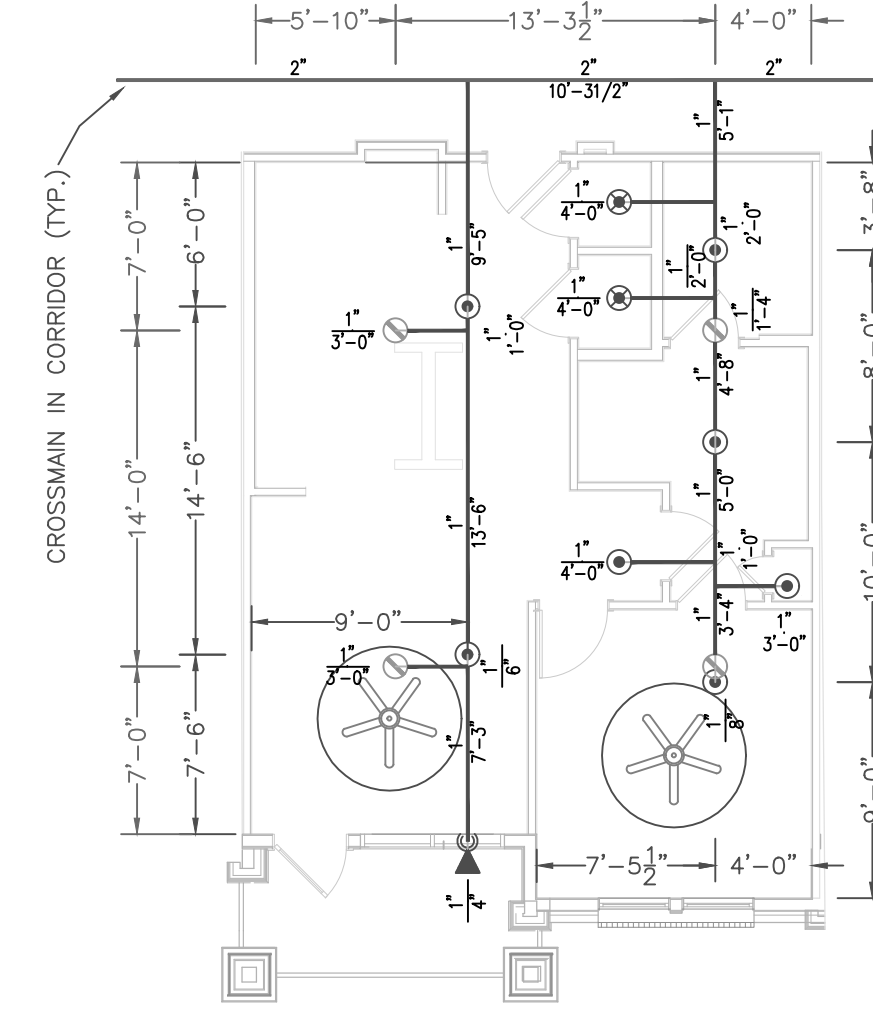
A1-s



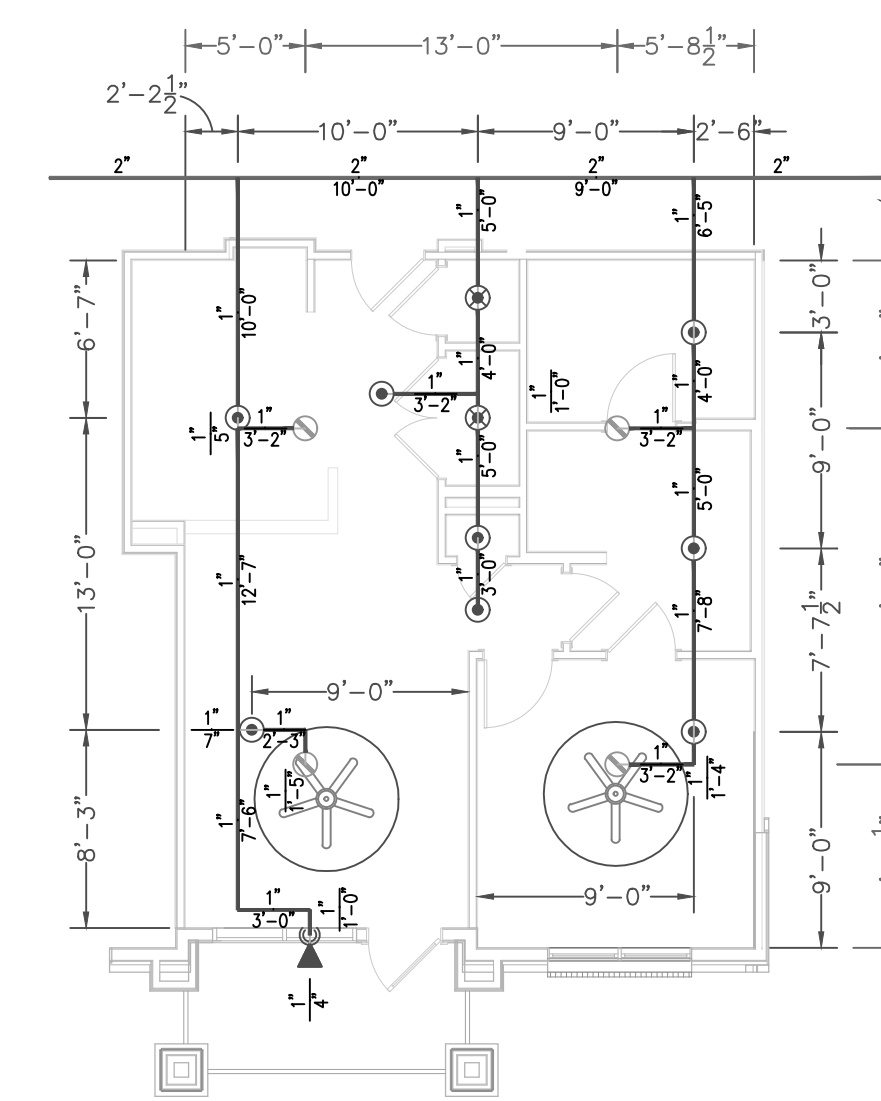
A1-t



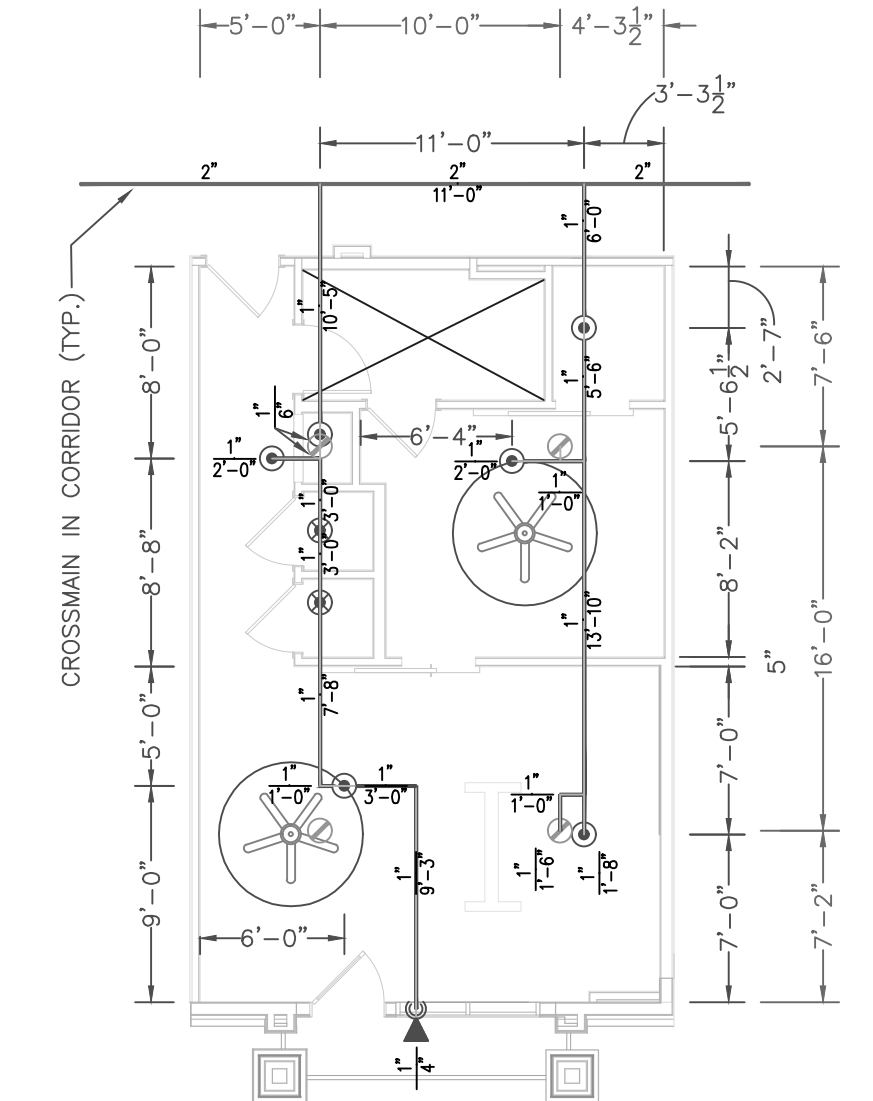
A1-t



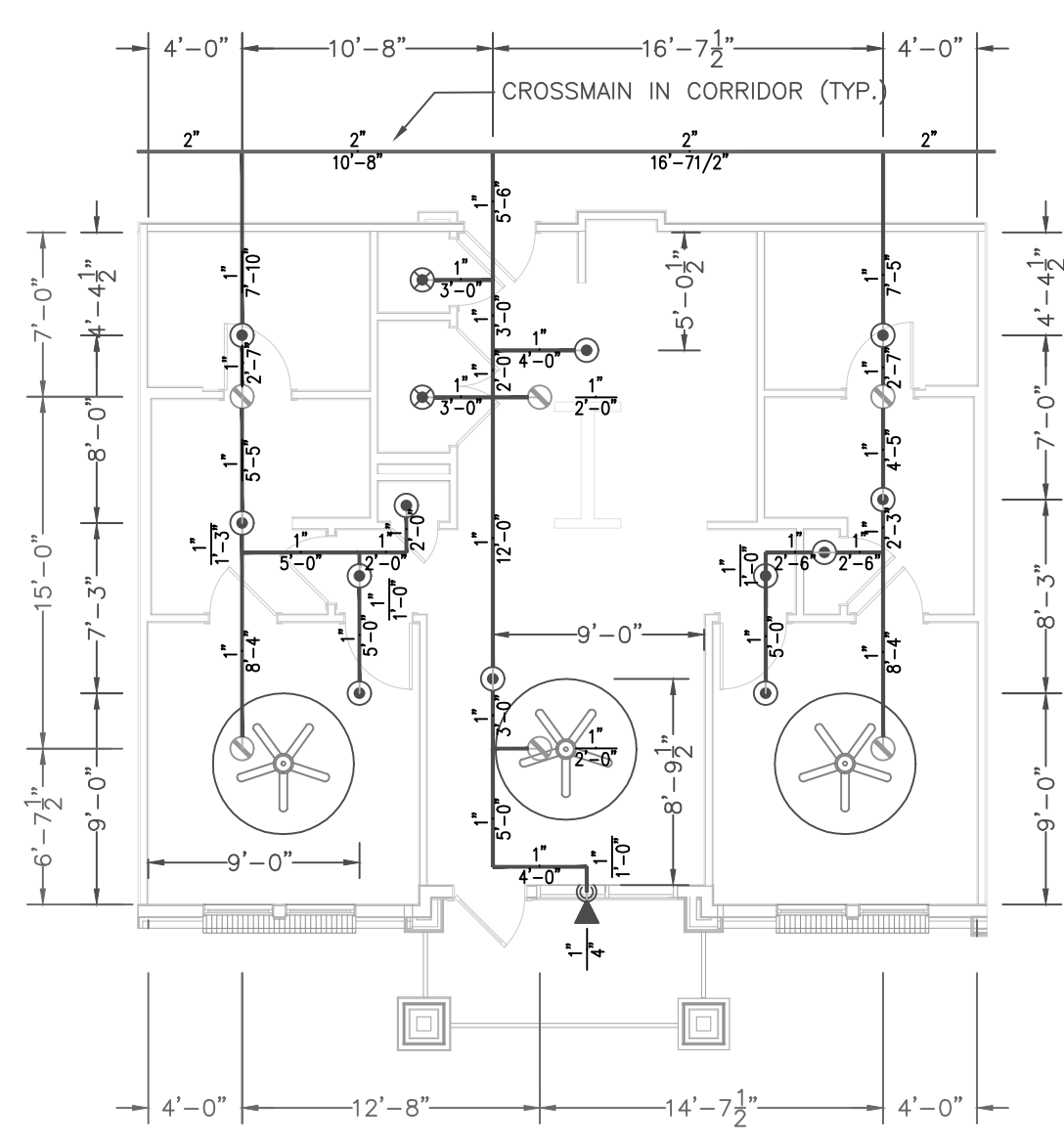
A1-tA



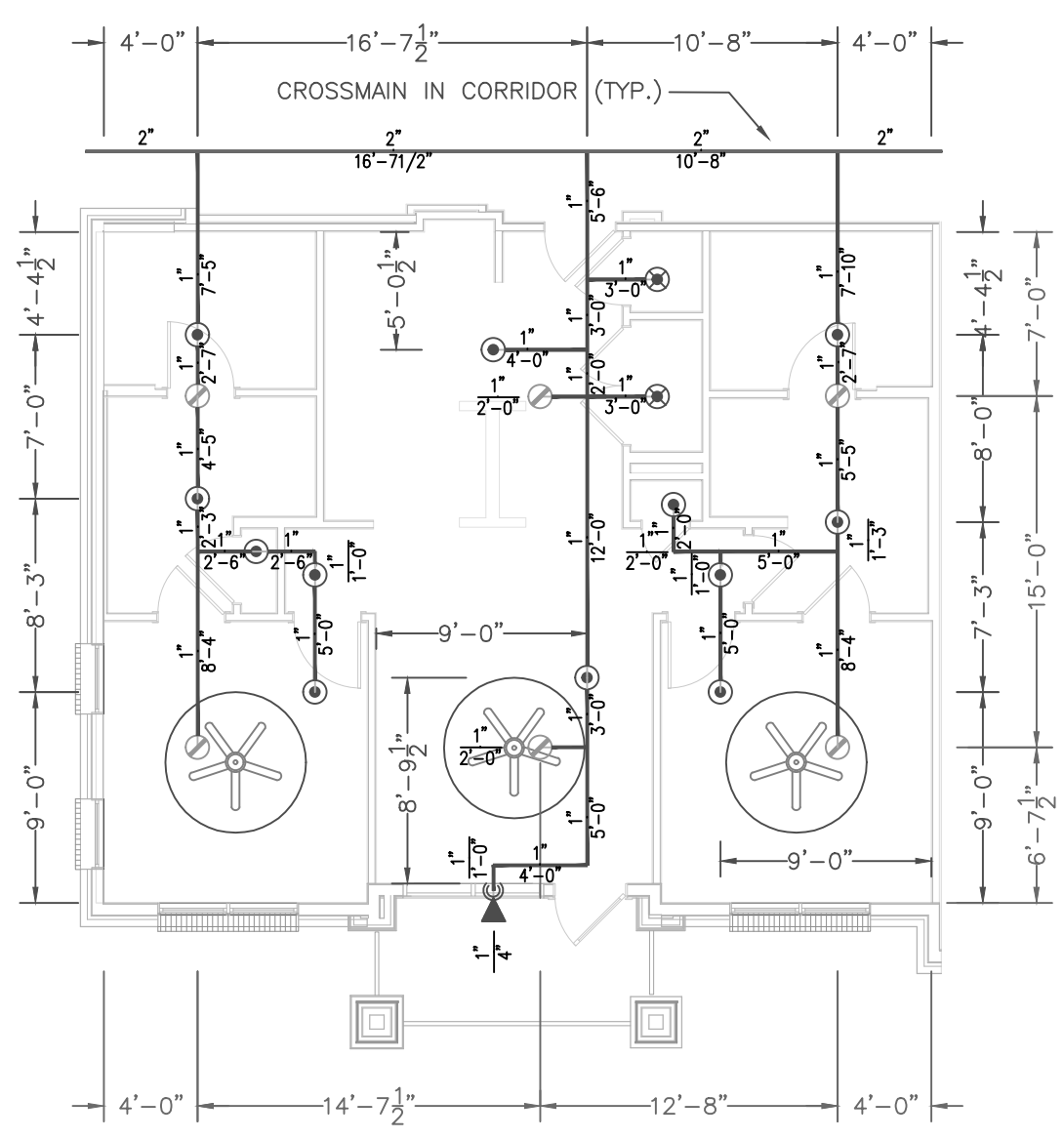
A3



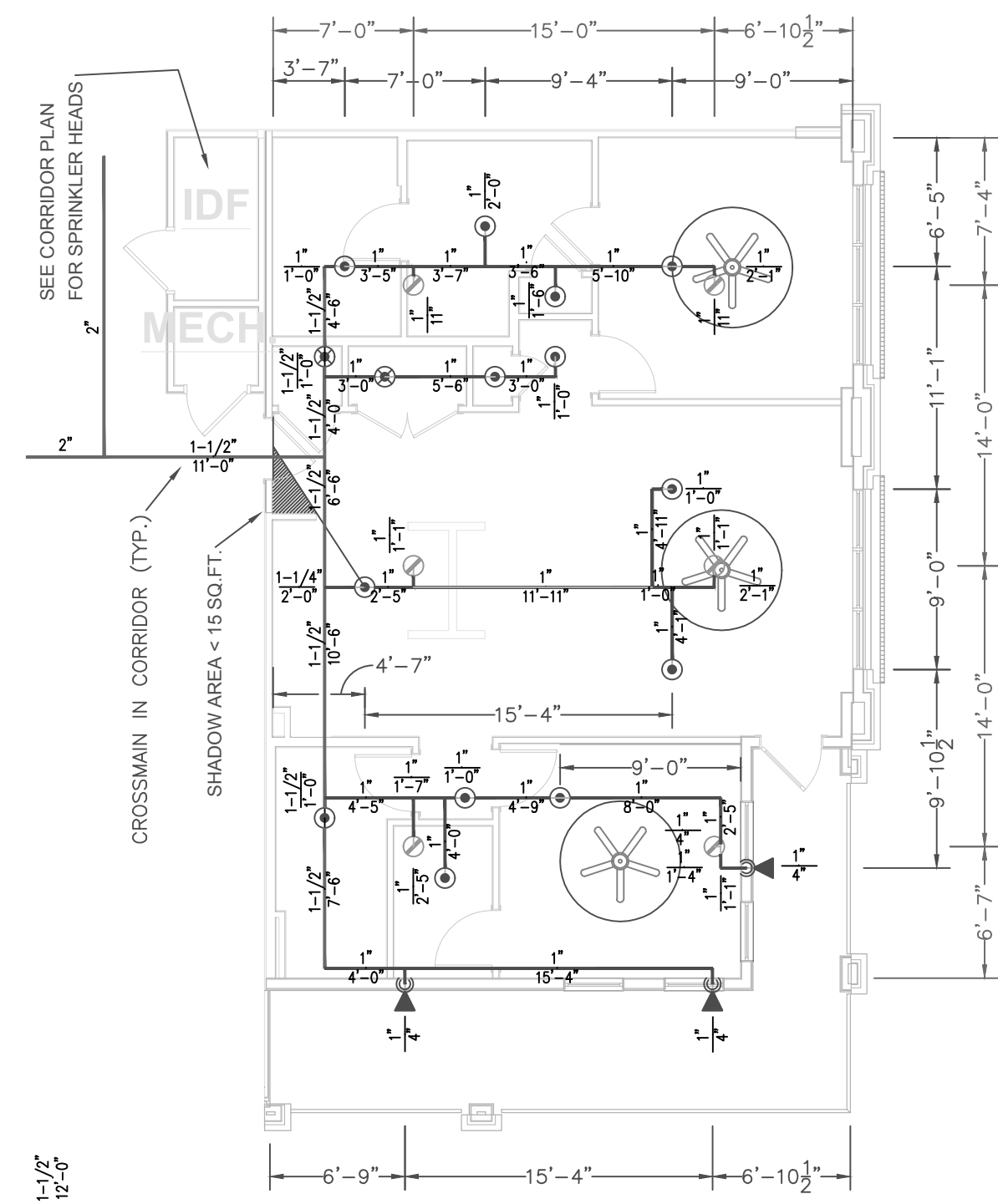
S1 / S1A



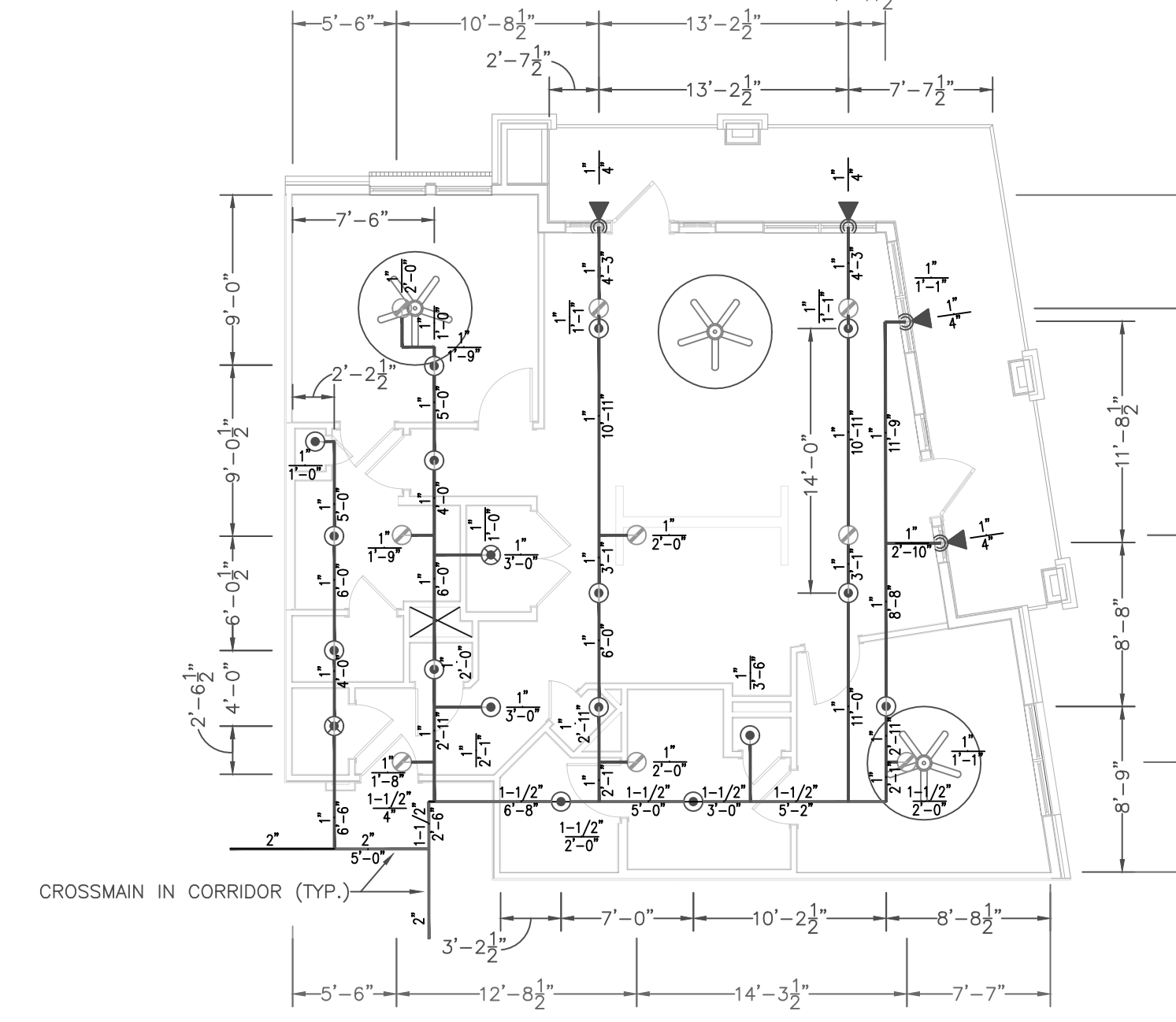
B1



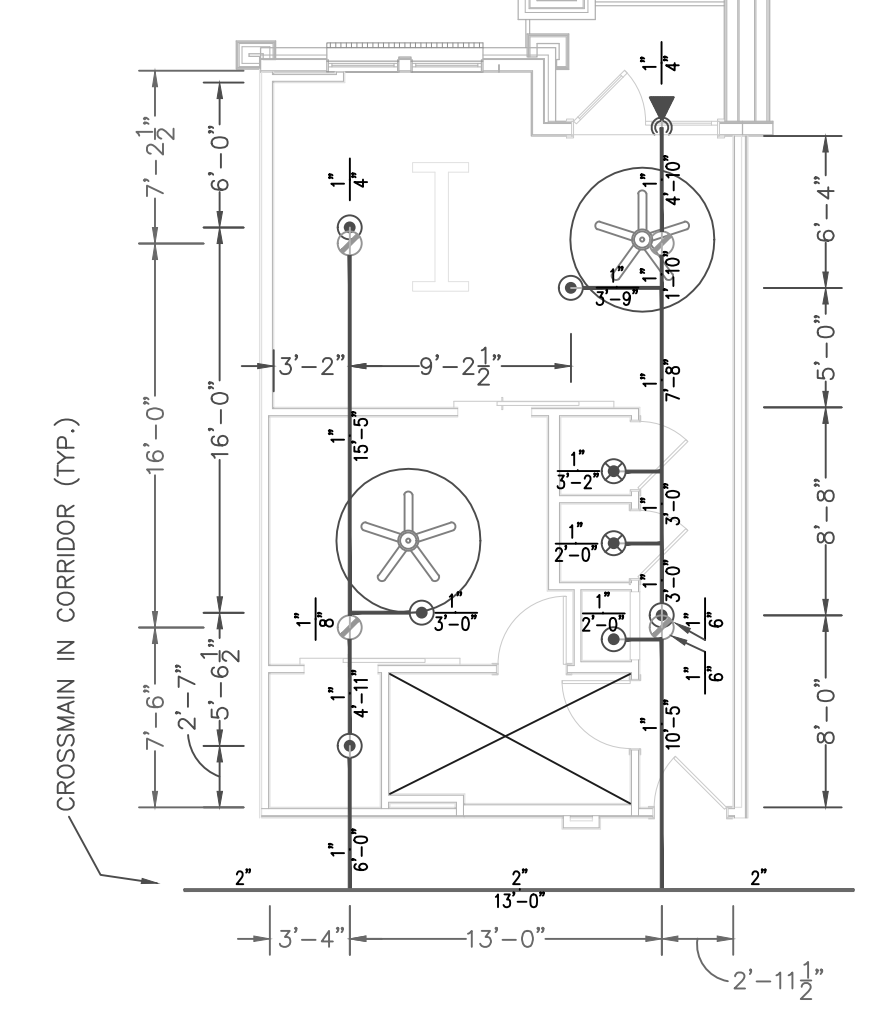
B1A



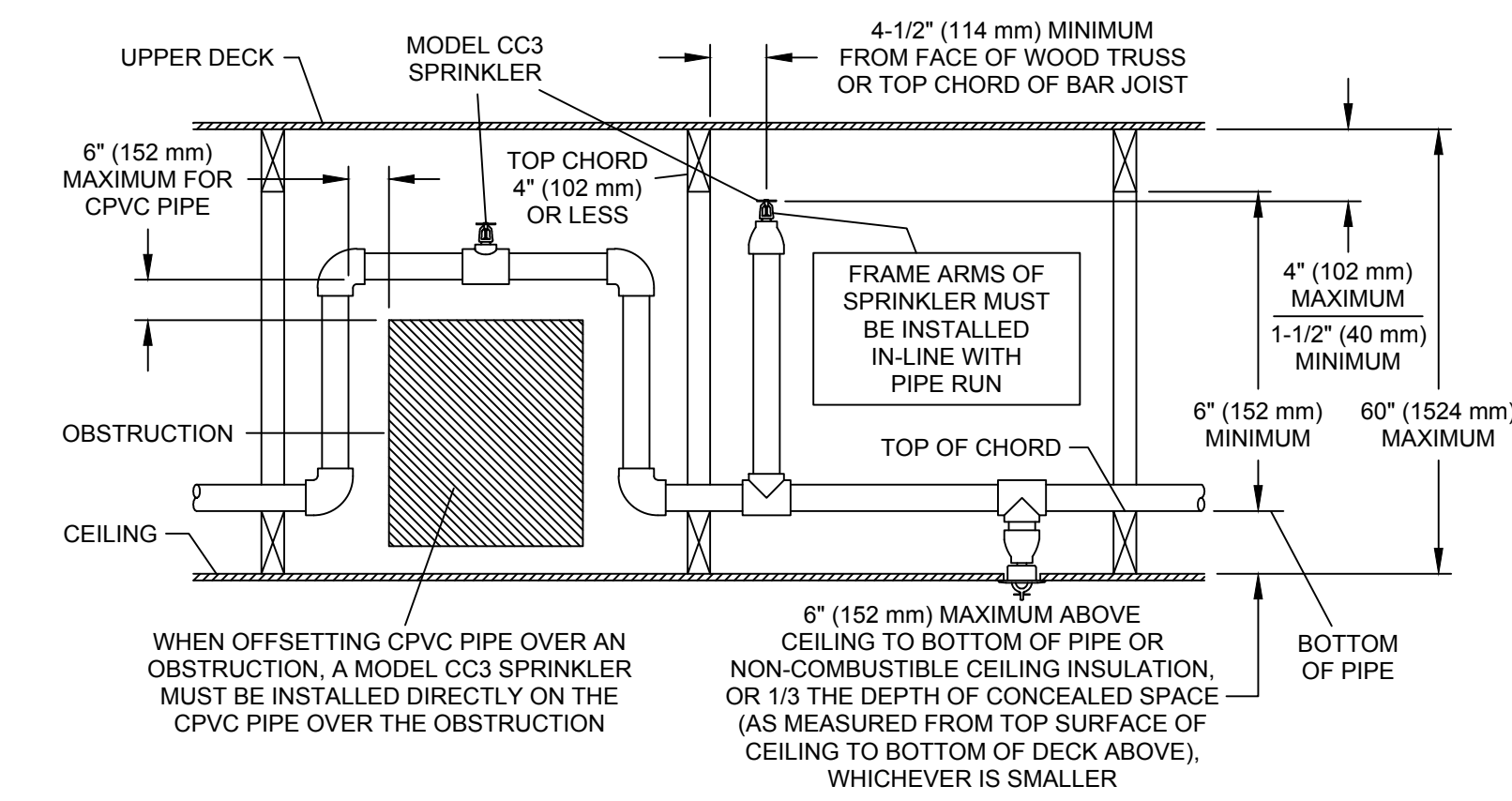
B3



B4



S2



HANGER SPACING CHART

PIPE TYPE	1"	1 1/4"	1 1/2"	2"	2 1/2"	3"	4"	6"
BLACK STEEL SCH. 10	12'-0"	12'-0"	15'-0"	15'-0"	15'-0"	15'-0"	15'-0"	15'-0"
BLACK STEEL SCH. 40	12'-0"	12'-0"	15'-0"	15'-0"	15'-0"	15'-0"	15'-0"	15'-0"
CPVC	6'-0"	6'-6"	7'-0"	8'-0"	9'-0"	10'-0"		

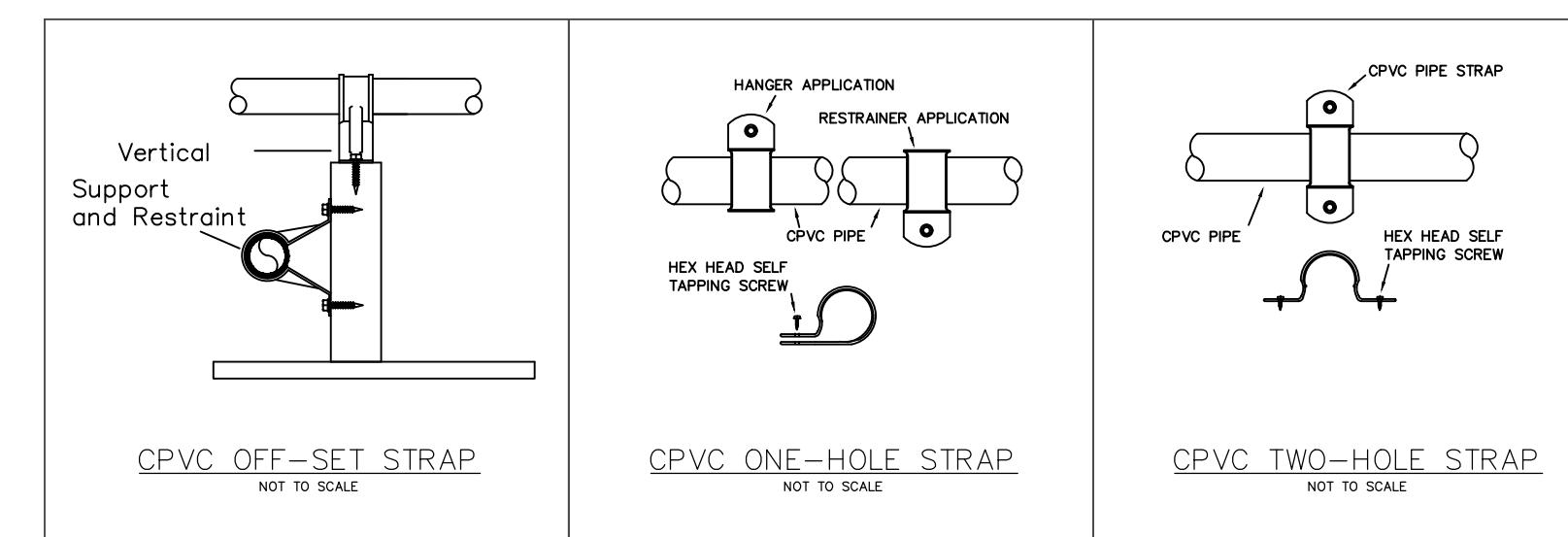
TABLE - R
ONE POINT RESTRAINT

NOMINAL PIPE SIZE	7/8"	1"	1 1/4"	1 1/2"	2"	2 1/2"	3"	4"	6"
LESS THAN 100 PSI	10'	10'	12'	12'	12'	12'	12'	12'	12'
GREATER THAN 100 PSI	10'	10'	12'	12'	12'	12'	12'	12'	12'

TABLE - S
TWO POINT RESTRAINT

NOMINAL PIPE SIZE	7/8"	1"	1 1/4"	1 1/2"	2"	2 1/2"	3"	4"	6"
LESS THAN 100 PSI	15'	15'	18'	18'	18'	18'	18'	18'	18'
GREATER THAN 100 PSI	15'	15'	18'	18'	18'	18'	18'	18'	18'

BRANCH LINES SHALL BE BRACED AT A DISTANCE FROM A TEE OR ELBOW TO PREVENT LIFT OF SPRINKLERS AS SHOWN IN TABLES 'R' OR 'S'



SPRINKLER HEAD SPACING CHART

AREAS	SPRINKLER HEAD	MAX. SPACING	MAX. DISTANCE OFF WALL
RESIDENTIAL - CORRIDOR	TYCO EC-8.0K RECESSED PENDENT	18' x 16' = 288 SQ. FT.	8'-0"
RESIDENTIAL - MECHANICAL/ELECTRIC (ALL FLOORS)	TYCO EC-8.0K RECESSED PENDENT	18' x 16' = 288 SQ. FT.	8'-0"
RESIDENTIAL - UNITS LEVELS 1-5 (ROOMS)	TYCO SERIES 181.8K RESIDENTIAL PENDENT	18' x 18' = 324 SQ. FT.	8'-0"
RESIDENTIAL - UNITS LEVELS 1-5 (EXTERIOR BALCONY)	GLOBE GL-1" NPT 5.6K RESIDENTIAL DRY SIDEWALL	18' x 18' = 324 SQ. FT.	8'-0"
RESIDENTIAL - INTERSTITIAL SPACES (ALL FLOORS)	TYCO TY-FRB 5.6K PENDENT	18' x 16' = 288 SQ. FT.	8'-0"

BUILDING 1000 RESIDENTIAL UNIT PLANS

SCALE: 1/8" = 1'-0"

NICET Level IV Automatic Sprinkler System Layout Certification #79357
Richard P. Kossler

Riverside Jacksonville @ Bishopgate
Jacksonville, Florida

1000 BUILDING - RESIDENTIAL UNITS

Swann Fire Protection
2220 COUNTY RD. 210 WEST
SUITE NO. 108-130
JACKSONVILLE, FL 32259
TEL: 904-452-9227

REVISIONS & APPROVALS
NO. DATE BY ISSUE FOR
6/27/16

SWAN QUAL. # OF TYP. DESCRIPTION
WEL. REC. SYSTEM N.P.A. #13
TOTAL SPRINKLERS: 18
TOTAL SQ. FT. OF CEILING COVERED: 32259

SCALE: 1/8" = 1'-0"
JOB NUMBER: 690
DATE: 8/1/2018