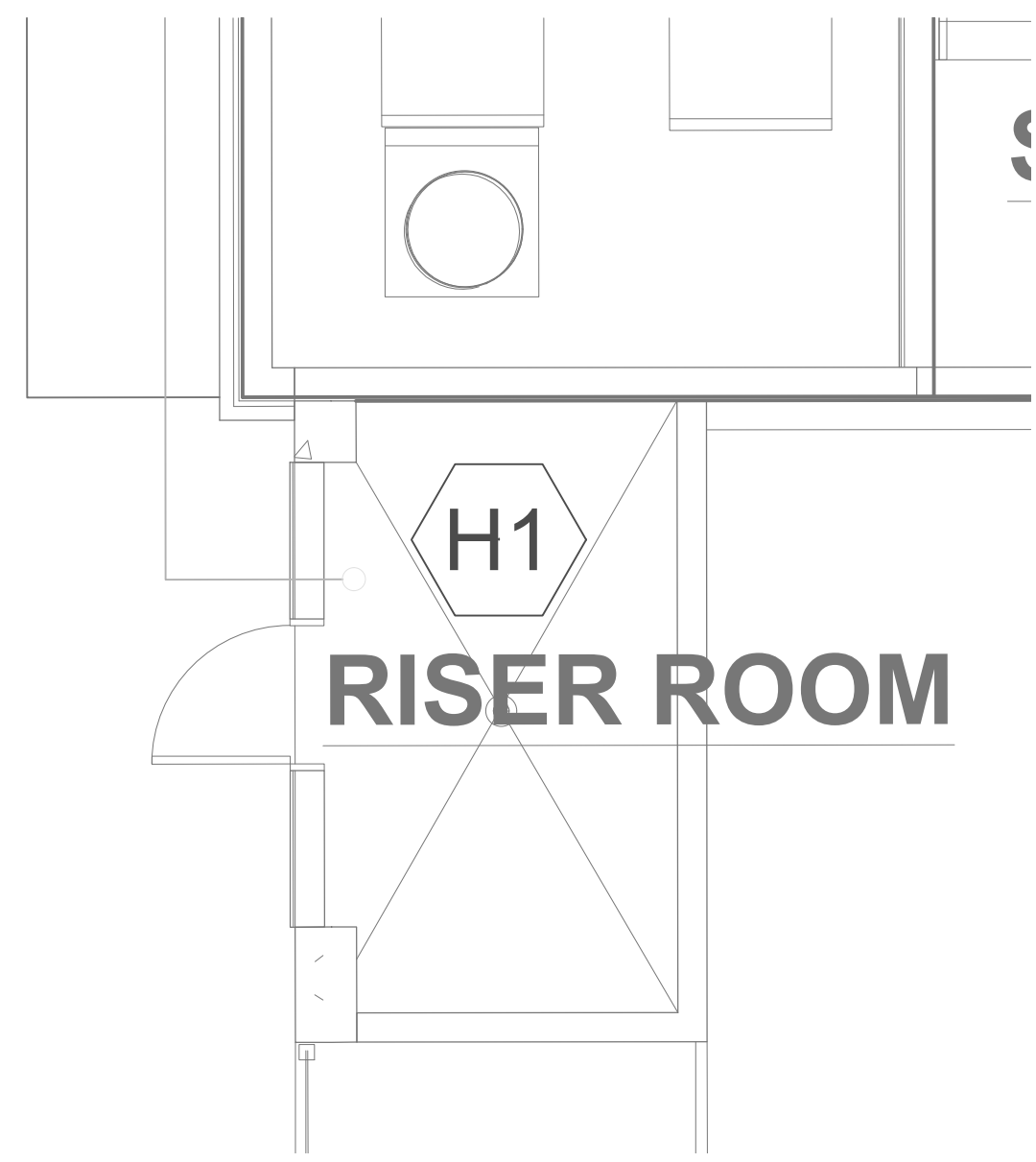
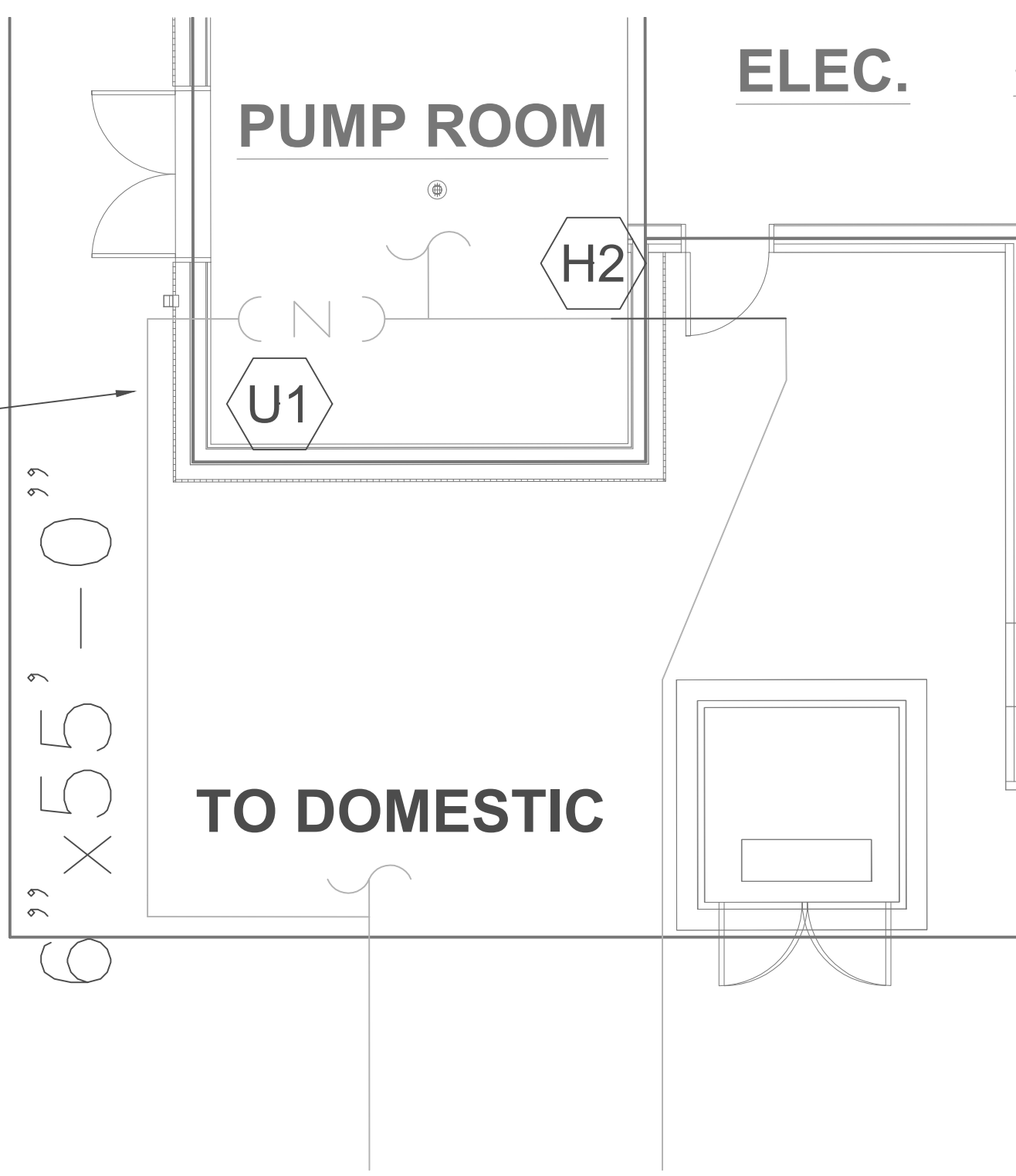


RIVERSIDE AVE.

6" FIRE WATER MAIN

6" x 55' - 0"



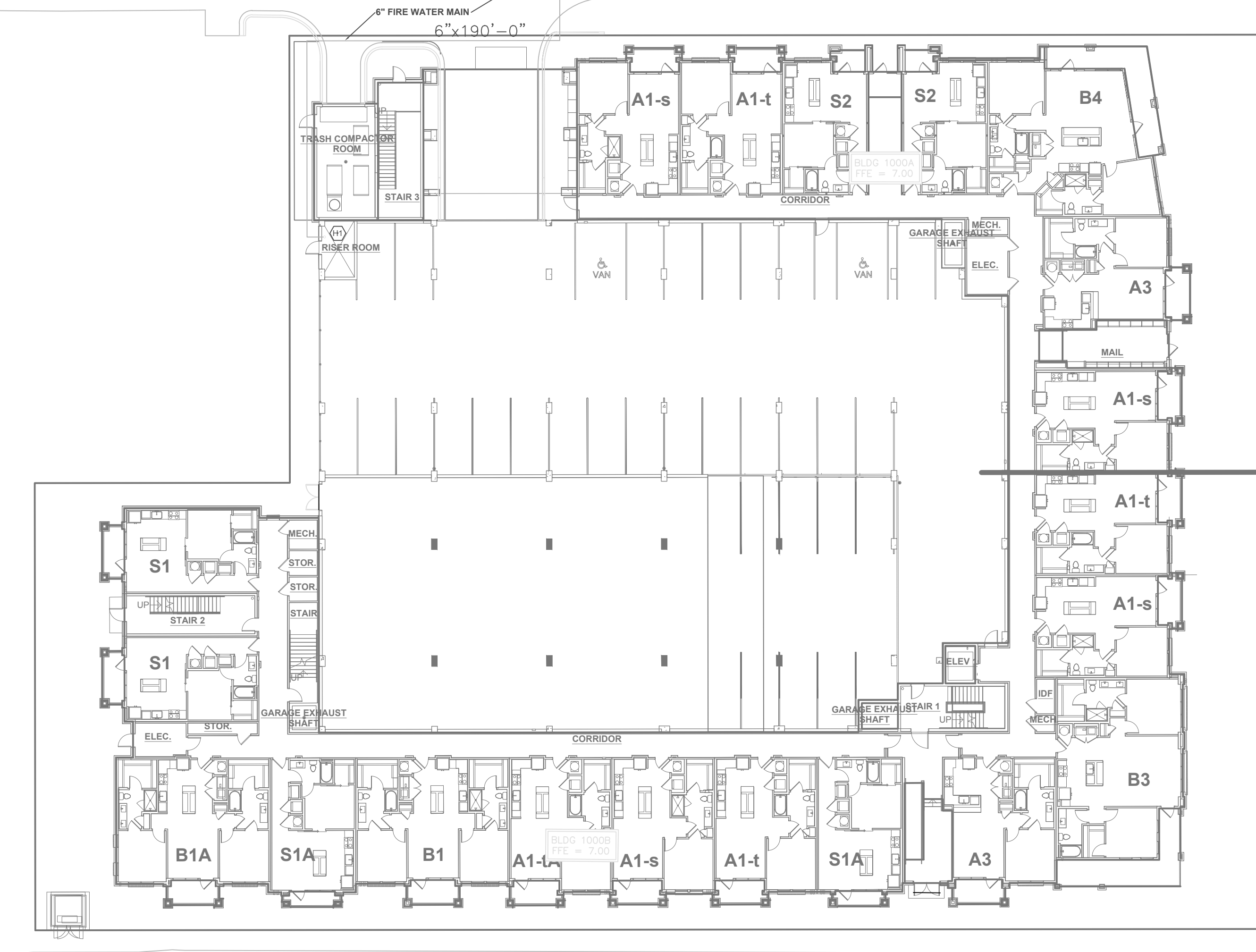
ELEC.

TO DOMESTIC

RISER ROOM

BISHOPGATE LANE

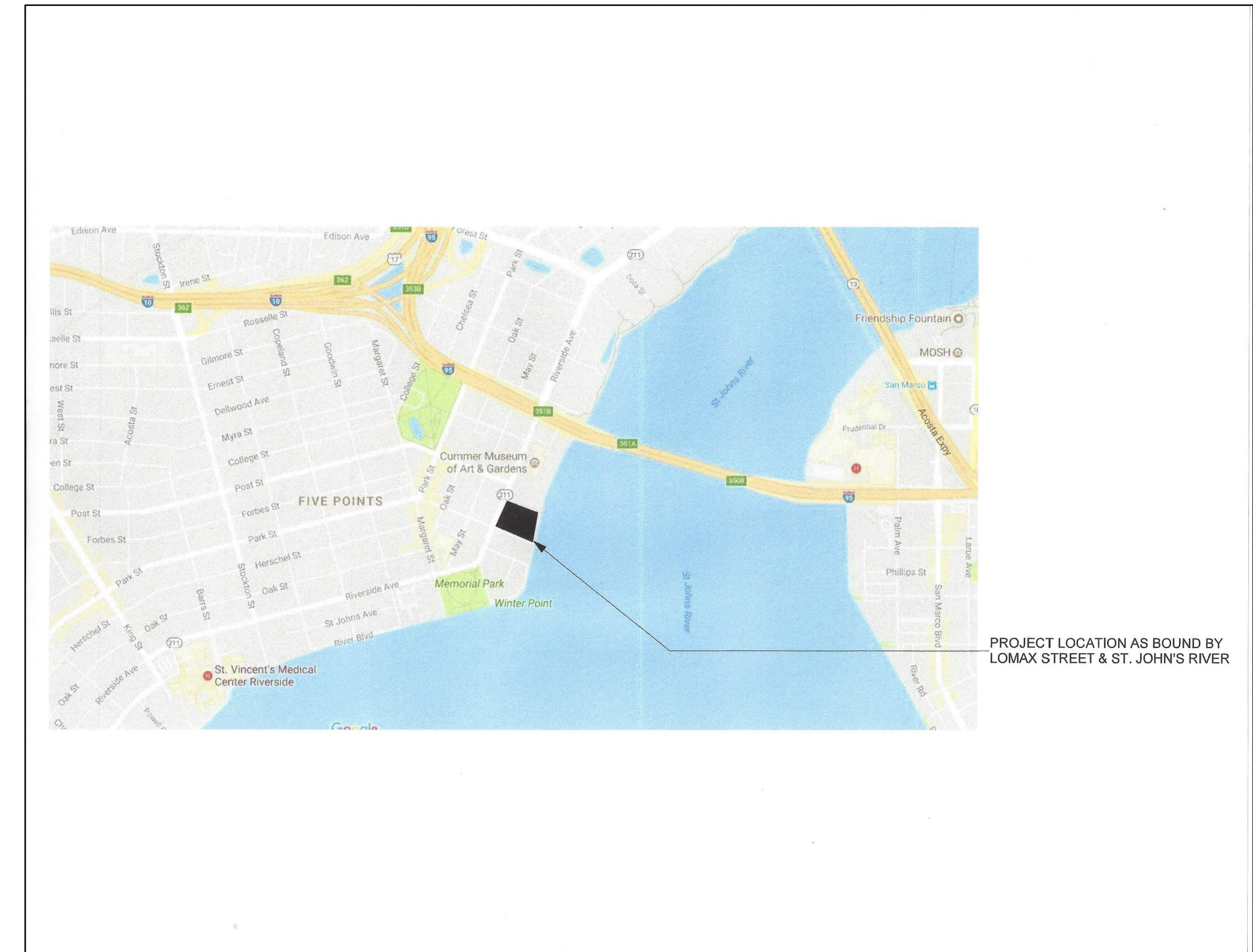
8" x 343' - 0"



SEE SHEET FP-18 FOR FIRE PUMP LAYOUT, DETAILS AND NOTES

SITE PLAN

LOMAX STREET



PROJECT LOCATION AS BOUND BY LOMAX STREET & ST. JOHN'S RIVER

GENERAL NOTES

- SCOPE OF WORK**
- NEW 5-STORY RESIDENTIAL FACILITY PROTECTED THROUGHOUT WITH WET-PIPE AND DRY-PIPE SPRINKLER SYSTEM
 - BUILDING 1000 - WET SYSTEMS TO BE INSTALLED THROUGHOUT LEVELS 1-5 PLUS LEVEL 6 AMENITY AREA
 - BUILDING 2000 - WET SYSTEMS TO BE INSTALLED THROUGHOUT LEVELS 1-5
 - LEVEL 2 THRU ATTIC - PIPING IN INTERSTITIAL SPACE W/ "COM" UPRIGHT AND RESIDENTIAL PENDENT SPRINKLERS
 - SPRINKLER HEADS FOR TRASH CHUTES BY MANUFACTURER - WATER SUPPLY LINE FOR SPRINKLER HEADS IS PROVIDED
 - DRY SYSTEMS TO BE INSTALLED THROUGHOUT GARAGE AREAS LEVELS 1-5
 - WET MANUAL STANDPIPE SYSTEM TO BE INSTALLED AS FOLLOWS:
 - BUILDING 1000 - IN STAIRS #1, #2, #3, CORE #, PARKING AND (1) IN CORRIDOR FOR FLOORS 1 THROUGH 5
 - BUILDING 2000 - IN STAIRS #4 AND #5 FOR FLOORS 1 THROUGH 5
 - DESIGN PER NFPA #13 2016 EDITION AND NFPA #14 2016 EDITION FOR THE FOLLOWING OCCUPANCIES
 - RESIDENTIAL FLOORS - NFPA #13, SECTION 11.3.1
 - PARKING GARAGES - NFPA #13, SECTION 4.3.1.1 ORDINARY HAZARD GROUP 1 (GARAGE/MECHANICAL/ELECTRIC/STORAGE ROOMS)
 - AMENITY AREA - NFPA #13, SECTION 4.3.2 LIGHT HAZARD
 - SPRINKLER HEADS TO BE LOCATED IN THE CENTER OF OR QUARTER POINTS CEILING TILES - SEE FP DRAWINGS FOR LOCATIONS
 - HANGER MATERIALS / SPACING MEETING NFPA #13 - "SHIMMY" OR LAG WOOD SCREWS, CONCRETE INSERTS, A.T.R. AND SWIVEL RING
 - SEISMIC BRACE HANGERS - NOT REQUIRED
 - WATER FLOW SWITCH / TAMPER SWITCH / PRESSURE SWITCH ALARM DEVICES WILL BE INSTALLED - WIRING BY FIRE ALARM CONTRACTOR
 - UNDERGROUND WATER MAINS - NOT IN CONTRACT (INSTALLED BY OTHERS)

- OCCUPANCY / DESIGN CRITERIA / SPECIAL COMPONENTS**
- LIGHT HAZARD / ORDINARY HAZARD GROUP 1 DESIGN
- SPRINKLERS TO BE USED:
 - BRASS - 11.2K QUICK RESPONSE (QR) EXTENDED COVERAGE UPRIGHT FOR PARKING GARAGE
 - BRASS - 5.8K QUICK RESPONSE (QR) STANDARD COVERAGE UPRIGHT (MISC. AREAS)
 - BRASS - 5.8K QUICK RESPONSE (QR) EXTENDED COVERAGE "COM" UPRIGHT FOR INTERSTITIAL/ATTIC SPACES
 - WHITE - 5.8K QUICK RESPONSE (QR) EXTENDED COVERAGE RESIDENTIAL RECESSED PENDENT (UNITS AND CORRIDORS)
 - WHITE - 5.8K QUICK RESPONSE (QR) STANDARD COVERAGE RECESSED PENDENT (MISC. & AMENITY AREA)
 - WHITE - 5.8K QUICK RESPONSE (QR) EXTENDED COVERAGE RECESSED DRY SIGNAL (WET BALCONIES)
 - SPRINKLER SQUARE FOOTAGE:
 - GARAGE - PER SPRINKLER HEAD LISTING FOR EXTENDED COVERAGE
 - INTERSTITIAL SPACES - 756 SQ.FT. MAX. PER SPRINKLER (LIGHT HAZARD)
 - AMENITY AREA - 225 SQ.FT. MAX. PER SPRINKLER
 - RESIDENTIAL - PER SPRINKLER HEAD LISTING FOR EXTENDED COVERAGE
 - LIGHT HAZARD DESIGN:
 - WET SYSTEM (RESIDENTIAL AREAS) - 0.10 GPM/SQ.FT. FOR (4) SPRINKLERS + 100 GPM HOSE
 - WET SYSTEM (AMENITY AREA) - 0.10 GPM/SQ.FT. OVER 1,500 SQ.FT. + 100 GPM HOSE
 - WET SYSTEM (INTERSTITIAL & ATTIC AREAS) - 0.10 GPM/SQ.FT. OVER 1,000 SQ.FT. + 100 GPM HOSE
 - ORDINARY HAZARD DESIGN:
 - DRY SYSTEM (GARAGE) - 0.15 GPM/SQ.FT. OVER 1,950 SQ.FT. + 250 GPM HOSE
 - ALLOWABLE TO UTILIZE DESIGN AREA REDUCTION PER N.F.P.A. #13 FIGURE 11.2.3.2.3.1 FOR LIGHT AND ORDINARY OCCUPANCIES

- WET MANUAL STANDPIPES**
- 1,000 GPM MAXIMUM REQUIRED FOR ALL STANDPIPES
 - 2 1/2" FIRE HOSE VALVES TO BE INSTALLED ON EACH FLOOR LEVEL
 - STANDPIPES TO BE INTERCONNECTED WITH 4" MAIN - CONNECTOR MAIN TO BE INSTALLED THROUGH PARKING GARAGE AREAS
 - FIRE DEPARTMENT CONNECTIONS TO BE LOCATED ON THE FACE OF PUMP AND RISER ROOMS
 - 4" VERTICAL STANDPIPES TO TERMINATE @ ROOF FLOORS - SEE PLAN FOR LOCATIONS
- DRY SYSTEM CAPACITY: VARIES - SEE INDIVIDUAL PLAN FOR DETAILS**
- INSTALLATION METHODS:**
- ALL MATERIALS / INSTALLATION METHODS WILL COMPLY WITH NFPA #13, 2016 EDITION
 - AND MANUFACTURED FOR 175 PSW WORKING PRESSURE. SYSTEM PIPING TO BE TESTED @ 200-PSI FOR 2 HOURS
 - SYSTEM CROSSMAIN PIPING - BLACK STEEL PIPE, UTILIZING GROOVED COUPLINGS AND FITTINGS
 - WET SYSTEM BRANCHLINES - BLACK STEEL PIPE, UTILIZING GROOVED FITTINGS AND COUPLINGS / OR TREADED FITTINGS
 - WET SYSTEM RESIDENTIAL - CPVC PIPING & FITTINGS
 - SPRINKLER HEAD RETURN BENDS TO UTILIZE 1" PIPE & TREADED FITTINGS AND / OR FLEXIBLE DROPS - SEE DETAIL ON FP DRAWINGS

- MATERIALS:**
- PIPE:
- WET SYSTEM CROSS-MAINS 2-1/2" & LARGER = BLACK STEEL SCHEDULE #10
 - WET SYSTEM PIPING IN RESIDENTIAL AREAS = CPVC
 - WET SYSTEM PIPING IN AMENITY AREA = BLACK STEEL SCHEDULE 10 AND / OR 40
 - DRY SYSTEM PIPING IN GARAGE AREAS = BLACK STEEL SCHEDULE #10
- GROOVED FITTINGS:
- 300 LB. DUCTILE IRON FLEXIBLE COUPLINGS / 300 LB. DUCTILE IRON FITTINGS
- TREADED FITTINGS:
- 125 LB. CAST OR DUCTILE IRON
- CPVC:
- BLAZEMASTER PIPING AND FITTINGS (OR EQUIVALENT)
- HANGERS:
- WOOD SCREWS, ALL THREAD ROD AND HANGER RING COMPONENTS - SPACING PER NFPA #13
- BACKFLOW PREVENTER:
- DOUBLE CHECK DETECTOR BACKFLOW PREVENTER, COMPLETE W/ OSGY VALVES
- FIRE PUMP:
- ELECTRIC IN-LINE RATED 400-GPM @ 75-PSI
- JOCKEY PUMP:
- ELECTRIC MULTI-STAGE RATED 5-GPM @ 100-PSI
- CONTROL VALVES:
- BUTTERFLY VALVES OR OSGY GATE VALVES W/ TAMPER SWITCHES
- WET RISER VALVE:
- METALLIC #717R RISER CHECK W/ TRIM
- DRY-PIPE VALVE:
- METALLIC #717R W/ TRIM AND SUPERVISORY SWITCHES
- AIR COMPRESSOR:
- GENERAL WOOD 0601500 AC RISER MOUNTED
- ALARM DEVICES:
- WATER FLOW SWITCH / TAMPER SWITCH / PRESSURE SWITCHES
- FD & ROOF HYDRANT:
- MEET LOCAL FIRE DEPARTMENT REQUIREMENTS

- WATER SUPPLY:**
- 6" CITY MAIN ADJACENT TO FACILITY ENTRANCE IN RIVERSIDE AVE.
 - 6" LEAD-IN BROUGHT INTO BACKFLOW PREVENTER & FIRE PUMP
 - 6" FROM FIRE PUMP INTO BUILDING 1000 - ENTERS THE BUILDING IN RISER ROOM
 - ALL UNDERGROUND WATER MAINS & INSTALLATION BY OTHERS
 - FIRE DEPARTMENT CONNECTIONS TO BE LOCATED ON THE FACE OF FIRE PUMP AND RISER ROOMS

- WATER FLOW DATA:**
- STATIC - 66 PSI
 - RESIDUAL - 54 PSI
 - GPM FLOW - 1,875 GPM
 - TEST DATE - 7/24/18 @ 3:13 PM
 - LOCATION - ON 6" CITY MAIN IN RIVERSIDE AVE. DIRECTLY ADJACENT TO SITE ENTRANCE

NICET Level IV Automatic Sprinkler System Layout Certification #79357
Richard P. Kosler

Riverside @ Bishops Gate
Jacksonville, Florida

SITE PLAN / GENERAL NOTES / DETAILS

Swain Fire Protection
2220 COUNTY RD. 210 WEST SUITE NO.108-139 JACKSONVILLE, FL 32209
TEL: 904-459-9123

NO.	DATE	ISSUE FOR PUNCH	REVISIONS & APPROVALS	DESCRIPTION
	9/27/18			

SYMBOL	QVAL			

SCALE: 1/8" = 1'-0"
JOB NUMBER: 690
DATE: 8/1/2018